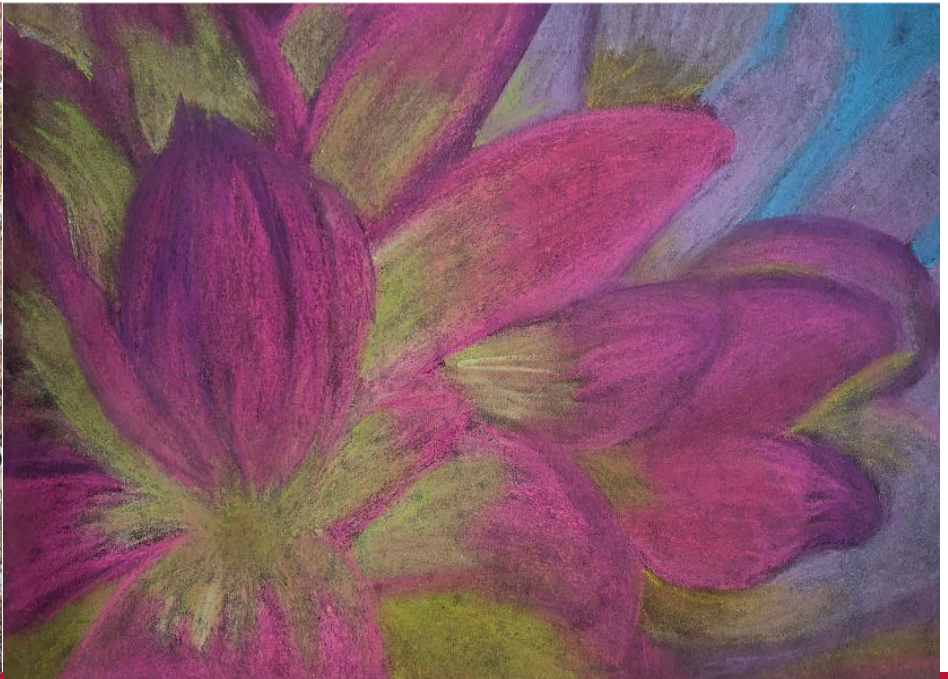


Anthony Dell'Italia- 5th Grade



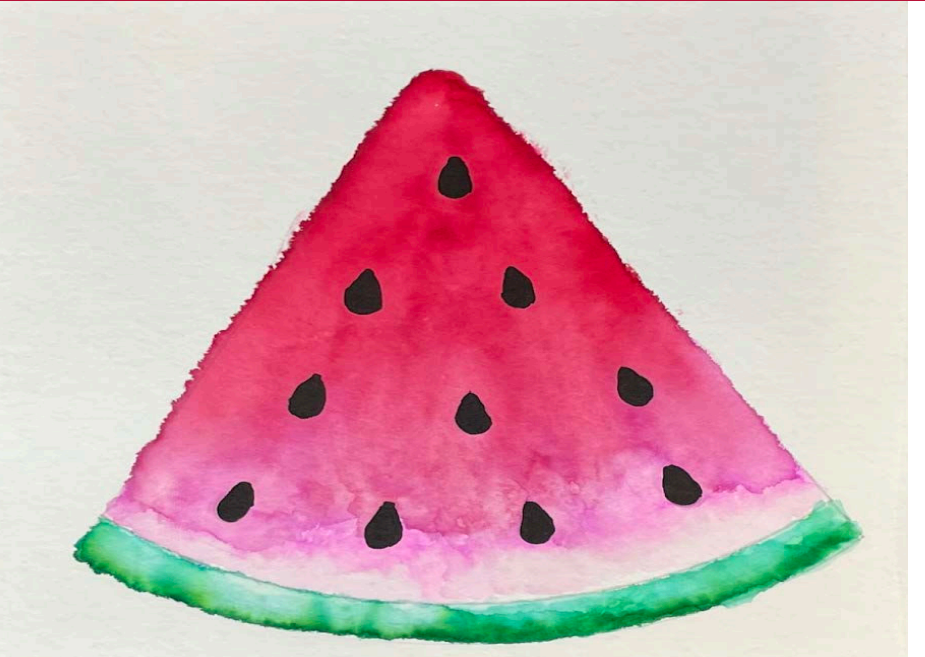
Danica Rossi- 9th Grade



# PLAINEDGE PUBLIC SCHOOLS 2025-2026 Calendar & School Guide



Emily D'Amore- 8th Grade



Penelope Schoenberger- 6th Grade

# GENERAL INFORMATION

## THE BOARD OF EDUCATION

### 2025-2026 Board of Education Members

Joseph Beyrouthy, President

Michael Morrissey, Vice President

Ken Auer, Joseph Garcia,

Douglas Pascarella, Michael Ponticello, Kathleen Versace

### Board of Education Meetings

The Board of Education consists of seven residents who are elected by the people and serve without salary for three-year terms of office. Board Meetings are generally held on the third Tuesday of each month at 7:30 p.m. (from September to June, located in the Innovation Learning Center in the west wing of Plainedge High School). The agenda and minutes of Board of Education Meetings are posted on the district's website.

During our Meetings, we look to highlight student and staff achievements, as well as provide in-depth presentations on the district's educational programs and services. These meetings strive to provide a clear picture of what is going on in the district. Our meetings also give community residents an opportunity to comment related to our schools and programs.

Please call the District Clerk's Office (516-992-7457) should you need more information about school board meetings. For the most up-to-date meeting information, visit [www.plainedgeschools.org](http://www.plainedgeschools.org).

### Contacting the Board of Education

You may contact the Board of Education in writing at 241 Wyngate Drive, North Massapequa, N.Y. 11758. You may also communicate with the Board through the following email addresses:

Joseph Beyrouthy, President.....[joseph.beyrouthy@plainedgeschools.org](mailto:joseph.beyrouthy@plainedgeschools.org)  
 Michael Morrissey, Vice President.....[michael.morrissey@plainedgeschools.org](mailto:michael.morrissey@plainedgeschools.org)  
 Ken Auer, Trustee.....[ken.auer@plainedgeschools.org](mailto:ken.auer@plainedgeschools.org)  
 Joseph Garcia, Trustee.....[joseph.garcia@plainedgeschools.org](mailto:joseph.garcia@plainedgeschools.org)  
 Douglas Pascarella, Trustee.....[douglas.pascarella@plainedgeschools.org](mailto:douglas.pascarella@plainedgeschools.org)  
 Michael Ponticello, Trustee.....[michael.ponticello@plainedgeschools.org](mailto:michael.ponticello@plainedgeschools.org)  
 Kathleen Versace, Trustee.....[kathleen.versace@plainedgeschools.org](mailto:kathleen.versace@plainedgeschools.org)

## Information Directory

Alcohol and Drug Policy.....	8
Asbestos Management Plan.....	10
Athletic Department.....	9
Attendance.....	6
Chain of Communication.....	28
Code of Conduct.....	5
Contact Information.....	3
DASA Coordinators.....	5
Delayed School Opening.....	4
Directory Information.....	10
Dress Code.....	6
Drug, Alcohol and Family Counseling.....	8
Early Dismissal.....	4
Emergency Closing of School.....	4
Emergency Drills.....	9
Guidance Services.....	4
Health Services.....	8
Hearing Impaired Services.....	8
Homework.....	6
Music Parents Club.....	11
Non-Public School Transportation.....	7
Notice of Non-Discrimination.....	8
Personal Property in School.....	6
Pesticide Notification.....	10
Privacy Act.....	8
Psychologists.....	4
Psychological Services.....	4
PTA Council.....	11
PTA - Eastplain, Schwarting and West.....	12
PTA - Plainedge High School.....	11
PTA - Plainedge Middle School.....	11
Registration.....	7
Report Card.....	6
School Lunch Program.....	9
Sexual Harassment Policy.....	10
Special Education.....	6
Student Accident Insurance.....	6
Tax Code.....	7
Tax Exemptions.....	9
Transportation.....	7
Use of Inclement Weather Days.....	4
Vandalism.....	9
Website.....	7

# CONTACT INFORMATION

## PLAINEDGE PUBLIC SCHOOLS

### PLAINEDGE HIGH SCHOOL

**Grades 9-12**  
**Hours: 7:25 a.m.-2:02 p.m.**  
241 Wyngate Drive  
North Massapequa, N.Y. 11758

**High School Office** 992-7550  
**Attendance** 992-7585  
**Nurse** 992-7580  
**Guidance Counselors** 992-7570

**Principal** Lauren Iocco  
**Assistant Principal** Kevin Burgoyne  
**Assistant Principal** Jennifer Vitale  
**Guidance Counselors** Joseph Como  
Michael Cipriano  
Elyssa Ditzio  
Lauren Henriques  
Holly Stonelli-Young

### PLAINEDGE MIDDLE SCHOOL

**Grades 6-8**  
**Hours: 8:00 a.m.-2:30 p.m.**  
200 Stewart Ave.  
Bethpage, N.Y. 11714

**Middle School Office** 992-7650  
**Attendance** 992-7682  
**Nurse** 992-7680  
**Guidance Counselors** 992-7670

**Principal** Anthony DeRiso  
**Assistant Principal** Jennifer Puleo  
**Assistant Principal** Vito Mannino  
**Guidance Counselors** Andrew Meyer  
Melissa Perez  
Danielle Ruccia

### EASTPLAIN ELEMENTARY SCHOOL

**Grades K-5**  
**Hours: 8:52 a.m.-3:00 p.m.**  
301 No. Delaware Ave.  
North Massapequa, N.Y. 11758

**Eastplain Office** 992-7600  
**Nurse** 992-7610  
**Principal** Mark Coccarelli  
**Assistant Principal** Colleen Torres

### JOHN H. WEST ELEMENTARY SCHOOL

**Grades K-5**  
**Hours: 8:52 a.m.-3:00 p.m.**  
499 Boundary Ave.  
Bethpage, N.Y. 11714

**John H. West School Office** 992-7500  
**Nurse** 992-7510

**Principal** Sara Azizollahoff  
**Assistant Principal** Colleen Torres

### CHARLES E. SCHWARTING ELEMENTARY SCHOOL

**Grades K-5**  
**Hours: 8:52 a.m.-3:00 p.m.**  
Jerusalem Avenue & Flower Road  
North Massapequa, N.Y. 11758

**Charles E. Schwarting Office** 992-7400  
**Nurse** 992-7410

**Principal** Jennifer Thearle  
**Assistant Principal** Colleen Torres

## ADMINISTRATIVE OFFICES

241 Wyngate Drive North Massapequa, N.Y. 11758  
Phone: 992-7450 Fax: 992-7445  
[www.plainedgeschools.org](http://www.plainedgeschools.org)

### INTERIM SUPERINTENDENT OF SCHOOLS

Carol Muscarella 992-7455 [carol.muscarella@plainedgeschools.org](mailto:carol.muscarella@plainedgeschools.org)

### ASSISTANT SUPERINTENDENT FOR BUSINESS

Peter Porrazzo 992-7417 [peter.porrazzo@plainedgeschools.org](mailto:peter.porrazzo@plainedgeschools.org)

### ASSISTANT SUPERINTENDENT FOR CURRICULUM AND INSTRUCTION

Dr. Lisa DePaola 992-7461 [lisa.depaola@plainedgeschools.org](mailto:lisa.depaola@plainedgeschools.org)

### ASSISTANT SUPERINTENDENT FOR HUMAN RESOURCES

Joseph A. Maisano 992-7466 [joseph.maisano@plainedgeschools.org](mailto:joseph.maisano@plainedgeschools.org)

### ASSISTANT TO THE SUPERINTENDENT FOR ACADEMIC SERVICES

Dennis Ricci 992-7460 [dennis.ricci@plainedgeschools.org](mailto:dennis.ricci@plainedgeschools.org)

### DIRECTOR OF FACILITIES III

Brett Prochazka 992-7470 [brett.prochazka@plainedgeschools.org](mailto:brett.prochazka@plainedgeschools.org)

### DIRECTOR OF HEALTH, PHYSICAL EDUCATION, AND ATHLETICS

Brian Sacks 992-7475 [brian.sacks@plainedgeschools.org](mailto:brian.sacks@plainedgeschools.org)

### DIRECTOR OF SPECIAL EDUCATION

Bridget Murphy 992-7480 [bridget.murphy@plainedgeschools.org](mailto:bridget.murphy@plainedgeschools.org)

### ASSISTANT DIRECTOR OF SPECIAL EDUCATION

Nicole Duffy 992-7480 [nicole.duffy@plainedgeschools.org](mailto:nicole.duffy@plainedgeschools.org)

### DIRECTOR OF GUIDANCE & STUDENT SERVICES

Greg Wasserman 992-7485 [greg.wasserman@plainedgeschools.org](mailto:greg.wasserman@plainedgeschools.org)

### Curriculum Associates

Ananina Kletzkina 992-7577 [ananina.kletzkina@plainedgeschools.org](mailto:ananina.kletzkina@plainedgeschools.org)  
Samantha Cartusciello 992-7571 [samantha.cartusciello@plainedgeschools.org](mailto:samantha.cartusciello@plainedgeschools.org)

### SECURITY & TRANSPORTATION

District Security 992-7492 Transportation Dept 992-7490

\*\* For all emergencies, call 911

# GENERAL INFORMATION

## GUIDANCE SERVICES

Plainedge Public Schools offer comprehensive guidance services for all students in Grades K-12. The guidance program provides each student with assistance in personal and academic development, career and college planning, and adjustment to school. During a series of conferences and group sessions spanning all four high school years, counselors help students plan their educational future.

## PSYCHOLOGICAL SERVICES

The main focus of the school psychologist is to support student success. They advise and consult with parents, teachers, and administrators. Psychologists work with students in a confidential setting and employ a variety of methods to evaluate and assist students in the areas of academic achievement and personality development.

The psychologist screens students for the Committee on Special Education and makes appropriate recommendations. Additionally, psychologists serve as a resource and contact between the school and numerous social agencies and mental health providers available to assist parents and children.

## PSYCHOLOGISTS

### District

Brigitte McCabe..... 992-7527

### Plainedge High School

Allison Cottone.....992-7581

Jenna Caruso.....992-7471

Melissa Minervini.....992-7609

### Plainedge Middle School

Lynn Mudryk.....992-7679

Lauren Marciano.....992-7609

### Charles E. Schwarting

Nadyne Castoro (K-2).....992-7409

Peter Mancuso (3-5).....992-7400

### John H. West

Kim Katz.....992-7509

Melissa Minervini.....992-7509

### Eastplain

Lauren Marciano.....992-7679

### CPSE

Allison Cottone.....992-7581

Brigitte McCabe..... 992-7527

### Parentally Placed Students

Peter Mancuso.....992-7511

## EMERGENCY CLOSING OF SCHOOL

When the safety of children requires that schools be closed because of weather, road conditions or other situations, the following sources will carry the news of the closing between 5:30 a.m. and 8 a.m. Please obtain your news from these sources rather than calling the schools. In addition to these sources, we will also notify parents through the automated telephone system. This system allows the administration to contact parents and caregivers by phone. Please make sure we have your most recent and preferred telephone number for this purpose.

**TV:** News 12 Long Island

**Website:** [www.plainedgeschools.org](http://www.plainedgeschools.org)

**Social Media:** Facebook and Instagram

## USE OF INCLEMENT WEATHER DAYS

There are no inclement weather day planned in the 2025-2026 school calendar. Remote learning will be implemented on inclement weather days.

## DELAYED SCHOOL OPENING

Depending on road conditions, the opening of school may be delayed by ninety minutes. If there is a delayed opening, all students who are bused to school should be at their regular bus stops exactly ninety minutes later than usual. Dismissal times remain the same.

## EARLY DISMISSAL

If it becomes necessary to dismiss students early because of emergency conditions in the district, announcements will be made on television station listed above. We will also notify parents through the automated telephone system. This automated system allows the administration to contact parents and caregivers by phone. Please make sure we have your most recent and preferred telephone number for this purpose. We will also post early dismissal information on the district website.

# GENERAL INFORMATION

## Conduct and Responsibilities

### Code of Conduct

The Board of Education is committed to providing a safe and orderly school environment where students may receive and district personnel may deliver quality educational services without disruption or interference. Responsible behavior by students, teachers and other district personnel, parents and other visitors is essential to achieving this goal.

The district has adopted a Code of Conduct that defines the expectations for conduct on school property and at school functions of students, staff, and visitors to school buildings, and the disciplinary actions resulting from violations of the Code, in accordance with the Dignity for All Students Act (DASA), as well as Safe Schools Against Violence in Education Program School Safety and Emergency Response Plan. It is based on the principles of civility, mutual respect, citizenship, character, tolerance, honesty and integrity. A complete copy of the Code is available at [https://bit.ly/PUFSD\\_CodeofConduct](https://bit.ly/PUFSD_CodeofConduct).

### Student Responsibilities

In order to promote a positive learning environment, all district students have the responsibility to:

- Contribute to maintaining a safe and orderly school that is conducive to learning by showing respect to other persons and property
- Be familiar with and abide by all policies, rules and regulations dealing with student conduct.
- Attend school every day unless legally excused; be in class, on time, and prepared to learn.
- Work to the best of their ability in all academic and extracurricular pursuits and strive toward the highest level of achievement.
- React to direction given by teachers, administrators and other school personnel in a respectful, positive manner.
- Develop mechanisms to control anger.
- Ask questions when they do not understand.
- Seek help in solving problems that might lead to discipline.
- Dress appropriately for school and school functions.
- Accept responsibility for their actions.
- Conduct themselves as representatives of the district when participating in or attending school-sponsored extracurricular events, and exercise the highest standards of conduct, demeanor and sportsmanship.

## DISTRICT DASA COORDINATORS

**CHARLES E. SCHWARTING ELEMENTARY SCHOOL: 992-7400**  
Jennifer Thearle

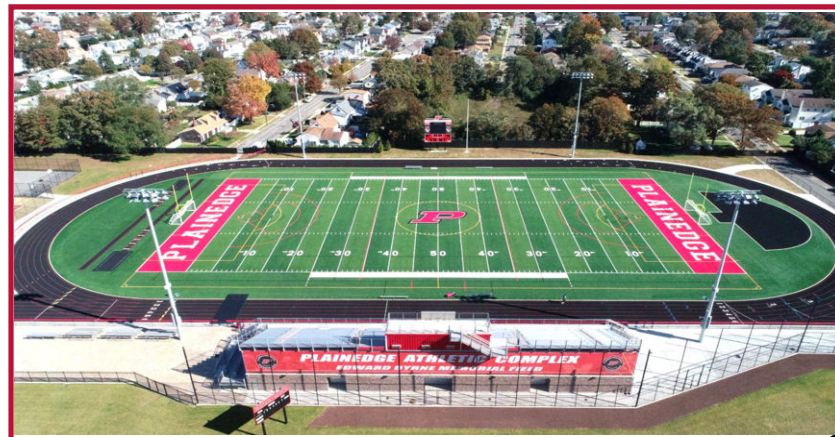
**EASTPLAIN ELEMENTARY SCHOOL: 992-7600**  
Mark Coccarelli

**JOHN H. WEST ELEMENTARY SCHOOL: 992-7500**  
Sara Azizollahoff

**PLAINEDGE MIDDLE SCHOOL: 992-7650**  
Anthony DeRiso  
Jennifer Puleo  
Vito Mannino  
Casey Kornahrens  
Patricia Furusa

**PLAINEDGE HIGH SCHOOL: 992-7550**  
Lauren Iocco  
Jennifer Vitale  
Kevin Burgoyne  
Elizabeth Lewis  
Alvina Allison  
Arielle Simner  
Anthony Giovanelli

To view the Plainedge Public School DASA Policy  
visit <https://bit.ly/DASAPOLICY>



# GENERAL INFORMATION

## Student Dress Code

The Plainedge Middle School and High School have adopted the following Student Dress Code as part of their Code of Conduct. All students are expected to give proper attention to personal cleanliness and to dress appropriately for school and school functions. A student's dress, grooming and appearance, including hairstyle/color, jewelry, makeup and nails, shall be safe, appropriate and not disrupt or interfere with the educational process.

1. Extremely brief garments and see-through garments are not appropriate.
2. Footwear must be worn at all times.
3. Items that are vulgar, obscene, or libelous, that denigrate others, or that promote and/or endorse the use of alcohol, tobacco, illegal drugs or violent activities are prohibited.

Students who violate the dress code shall be required to modify their appearance by covering or removing the offending item and, if necessary, replacing it with an acceptable item. Any student who refuses to do so shall be subject to discipline, up to and including in-school suspension for the day.

## SPECIAL EDUCATION

The district provides a full continuum of special education support and services to meet the needs of all students. Special education needs that cannot be met within the district are arranged in cooperation with neighboring districts, BOCES, outside agencies and private schools.

Early identification of a disability is vital in helping a child receive an appropriate education. Students are identified through the district's kindergarten screening program, parental referrals or referrals from principals, teachers, counselors, or medical professionals. Children with a potential disability are referred to the Committee on Special Education.

The Committee on Special Education (CSE) is comprised of a chairperson, a parent of a child with special needs, both a general and special education teacher, and a school psychologist. The presence of a physician is optional. The duties of the CSE are to review all data and to recommend to the Board of Education appropriate placement and programs for each child being classified.

## ATTENDANCE

Attendance is required every school day. Excused attendance is defined as absence, tardiness, and early departure from class or school due to personal illness, illness or death in the family, religious observance, quarantine, required court appearances, attendance at health clinics, approved college visits, approved internship programs or other such reasons as designated by the parent and accepted by the building principal.

Please telephone the main office when your child is absent. A note explaining the absence is required on the day your child returns to school. Children should arrive at school on time. A written note is required if a child is late.

## HOMEWORK

Homework is an important adjunct to schoolwork. In general, homework is assigned to reinforce the work done in school or the completion of assignments, or research work that cannot be completed in school. The amount of work necessary depends on the subject, type of class and the individual child. You can assist with homework by providing a satisfactory place for work free from distractions, by establishing a time schedule for homework and by showing an interest in your child's work. The district has adopted "Homework Guidelines" that can be found on the district website.

## PERSONAL PROPERTY IN SCHOOL

The Plainedge School District assumes no responsibility for personal property brought to school or to any school-related activity; that responsibility rests with the student. The Board of Education will not reimburse students or parents for loss or damage to personal property.

Students are also held responsible for any school property, such as books, locks, musical instruments, etc., that is assigned to them for their personal use.

## REPORT CARD

The report card is one of the ways we communicate with you about your child's progress in school. While the report card is informative, it does not contain as much information as teachers would like to share with you. Therefore, please make every effort to attend parent-teacher conferences that are scheduled during the year. Parents are able to access their children's grades through the Internet by accessing Power School.

## STUDENT ACCIDENT INSURANCE

The Plainedge Schools provide student accident insurance without charge. The insurance is known as NON-DUPLICATING COVERAGE. This means that parents may be reimbursed for medical bills for an accident occurring at school, AFTER their own private insurance has been utilized. The school district itself is not responsible for the payment of medical bills that result from an accident.

# GENERAL INFORMATION



## REGISTRATION

Registration for all new students to the district is completed online by visiting [www.plainedgeschools.org](http://www.plainedgeschools.org). For Parents tab, New Student Registration. In-person appointments may be scheduled by calling 516-992-7420. At the time of registration, parents will be required to complete our registration packet, which includes a student registration form, proof of residency forms and a proof of immunization form. Additional information regarding these forms and our registration process can be found on our district website, or by contacting our district registrar at 516-992-7420. It should be noted that if it is determined that a student is not living in the Plainedge School District or that residence is solely for the purpose of attending Plainedge Public Schools, the full cost of yearly tuition will be charged to the person signing the residency affidavit. This tuition may range from \$20,000 to \$65,000, depending on the level of services provided.

## PLAINEDGE WEBSITE

To obtain the latest information about upcoming events, school board meetings, minutes of Board meetings, new academic initiatives, athletics, extra-curricular activities, helpful hints for families, students and staff, and more, visit our website at: [www.plainedgeschools.org](http://www.plainedgeschools.org).

## TAX CODE – 501

In order to ensure the accurate allotment of state aid for our school district, please remember to insert Plainedge Public Schools Code 501 on your New York State Income Tax Return.

## TRANSPORTATION

Transportation to and from the district schools is provided as follows:

- Grades K-5:** students living 3/4 mile or more from the school of assigned attendance.
- Grades 6-8:** students living .25 miles or more from the school of assigned attendance.
- Grades 9-12:** students living 1-1/2 miles or more from the school of assigned attendance.

Bus passes are issued free of charge at the beginning of the school year to eligible students. Passes are non-transferable and are to be shown to the driver upon request. A \$1 fee will be charged to replace a bus pass. On the bus, students must remain seated throughout the trip. Smoking, fighting or the use of foul or abusive language is not allowed. As a safety measure, backpacks are recommended for elementary school students.

All bus riders should be at their pick-up point at least five minutes before the scheduled pick-up time. If the bus is delayed, please wait 10 to 15 minutes before reporting a bus overdue.

To report an emergency situation, or a bus more than 15 minutes late, please call 992-7490. Please give the name of the school, the bus number and the bus stop.

## NON-PUBLIC SCHOOL TRANSPORTATION

Parents of children attending non-public schools must file a request for transportation prior to April 1 preceding the school year involved.

Please write to Plainedge Public Schools, Office of Transportation, 241 Wyngate Drive, P.O. Box 1669, North Massapequa, N.Y. 11758.

# GENERAL INFORMATION

## HEARING IMPAIRED PERSONS

Parents with a hearing impairment are entitled to an interpreter for school meetings such as parent/teacher conferences, child study team meetings, guidance planning meetings and student activities such as plays, concerts and graduations, according to Board of Education policy. Services are provided free of charge.

Parents in need of an interpreter should make their request in writing at least 10 school days prior to the scheduled meeting or activity, and submit requests to the Office of Special Education.

## DRUG, ALCOHOL, AND FAMILY COUNSELING

District social workers provide services in the areas of drug, alcohol, and family counseling to parents and students. At the middle school level, the primary goal of the program is prevention, while at the high school level, the program is geared to both prevention and intervention.

**Social workers may be reached during the school year by calling:**

### Plainedge High School

Arielle Meller 992-7582

### Plainedge Middle School

Patricia Furusa 992-7681

*Parents of elementary school students should contact the school principal with any concerns.*

## HEALTH SERVICES

School nurses are available for first aid, emergencies, and other health-related issues. Additionally, school nurses conduct annual vision and hearing tests and coordinate compliance with immunization requirements. A school doctor is available to perform necessary physical examinations. Health examinations are required by law for children entering Grades Pre-K or K, 1, 3, 5, 7, 9, and 11.

## ALCOHOL AND DRUG POLICY

It is the policy of the district to promote healthy lifestyles for its students and staff and to inhibit the use/abuse of alcohol, tobacco and other substances. Board of Education policy prohibits the use, possession, sale, or distribution of alcohol or drugs while on school premises or at school-related functions.

The district has developed substance use/abuse prevention and intervention programs, including a sequenced K-12 prevention curriculum, and substance abuse assessment and counseling services for students.

## PRIVACY ACT

The Plainedge Public Schools have established procedures relating to student records for parents and students. Each student has the right of protection against an unwarranted invasion of privacy.

The superintendent of schools has developed procedures which recognize that parents and eligible students have the following rights:

- To inspect and review their school records.
- To challenge the contents of records on grounds of being inaccurate, misleading, or otherwise in violation of their rights.
- To deny access to their records without their consent except where disclosure without consent is authorized by law.
- To file complaints of alleged violations of the FERPA with the FERPA Office of the U.S. Department of Education, Washington, DC 20201.
- To obtain a copy of district policy on student records.

Those who are interested in access to student records or the policy on student records may call 992-7485.

## NOTICE OF NON-DISCRIMINATION

The Plainedge School District does not discriminate on the basis of race, color, creed, religion, national origin, sex, sexual orientation, age, marital status, military status, disability, predisposing genetic characteristic, domestic violence victim status, or any other basis prohibited by New York State and/or Federal non-discrimination laws in its educational programs and activities, or employment practices, including vocational educational opportunities and provides equal access to designated youth groups. Inquiries regarding the District's non-discrimination policies should be directed to:

### • Title IX Compliance Officer

(Education Amendments of 1972)

Joseph A. Maisano, Assistant Superintendent for Human Resources, Plainedge Public Schools Central Administration, 241 Wyngate Drive, North Massapequa, New York, 11758, (516) 992-7466 [joseph.maisano@plainedgeschools.org](mailto:joseph.maisano@plainedgeschools.org)

### • ADA Compliance Officers/Coordinators

Joseph A. Maisano, Assistant Superintendent for Human Resources, Plainedge Public Schools Central Administration, 241 Wyngate Drive, North Massapequa, New York, 11758, (516) 992-7466 [joseph.maisano@plainedgeschools.org](mailto:joseph.maisano@plainedgeschools.org)  
Greg Wasserman, Director of Guidance, (516) 992-7485, [greg.wasserman@plainedgeschools.org](mailto:greg.wasserman@plainedgeschools.org)

### • Section 504 Compliance Officers/Coordinators

Joseph A. Maisano, Assistant Superintendent for Human Resources, (516) 992-7466 [joseph.maisano@plainedgeschools.org](mailto:joseph.maisano@plainedgeschools.org)  
Greg Wasserman, Director of Guidance, (516) 992-7485, [greg.wasserman@plainedgeschools.org](mailto:greg.wasserman@plainedgeschools.org)  
Bridget Murphy, Director of Special Education, (516) 992-7480, [bridget.murphy@plainedgeschools.org](mailto:bridget.murphy@plainedgeschools.org)

The Title IX, ADA, and Section 504 coordinators will provide information, including complaint procedures, to any student or employee who feels that his or her rights may have been violated by the district or its officials. Questions about Title IX may be referred to the employee designated to coordinate Title IX compliance or to the assistant secretary for civil rights. Inquiries regarding discrimination on the bases listed above may also be referred to the federal Office of Civil Rights (OCR) within the Department of Education, Visit the Office for Civil Rights website or call

# GENERAL INFORMATION

## SCHOOL LUNCH PROGRAM

New York State is implementing a universal free school meal program, providing free breakfast and lunch to all public school students regardless of income. This program however does not include ala carte items and snacks. Money in any amount can be sent either in cash or check made out to Plainedge School District. The money will go into your child's account and can be used to purchase ala carte items and snacks at lunchtime throughout the school year. You may also use "myschoolbucks.com" to put money into your child's account using a debit or credit card. All school menus, and free and reduced lunch applications are available on line at [www.plainedgeschools.org](http://www.plainedgeschools.org). The free and reduced application must be printed, filled out with an original signature, and returned to the lunch office at 241 Wyngate Drive, North Massapequa, NY 11758, Attn: School Lunch Program. For additional information on the about the school lunch program, please call our school lunch manager Edward Ross at 992-7594 or e-mail [Edward.ross@plainedgeschools.org](mailto:Edward.ross@plainedgeschools.org).

## Plainedge Athletic Office

The Plainedge School District typically offers a variety of sports for students in Grades 7-12. The sports are listed in the middle school and high school program guides.

All participants must have physical exams and present permission forms to the school nurse before participating in the interscholastic program.

For further information, please call the athletic office at 992-7475.

## EMERGENCY DRILL EXERCISE

As part of the Safe Schools Against Violence in Education Program (SAVE) and our emergency response

plan, the district's safety team has developed a plan for an annual test of our school building emergency response plans. The drill shall test the following components of the plan: alert warning, communications, staff procedures, transportation, public information and emergency procedures. Parents shall be notified in advance of the date of the drill.

## VANDALISM

Educational programs teach children positive attitudes toward public and private property. In an effort to control vandalism, the district employs security guards and has installed a vandal alarm system. Anyone who is apprehended while involved in vandalizing our buildings will be prosecuted. Parents are reminded that current New York State law makes parents responsible for \$1,500 in damages incurred by the actions of their children. It is the policy of the Board of Education to seek reimbursement from parents whenever possible. If you see any of the district schools being vandalized, please call this number immediately: 992-7492.

## TAX EXEMPTIONS

The Plainedge Board of Education passed resolutions to adopt the Senior Citizen Property Tax, the Persons with Disabilities and Limited Income Property Tax, the Veterans Tax and the Volunteer Firefighters and Ambulance Workers Tax Exemptions. The amount of the exemption is determined by the Nassau County Department of Assessment based on a sliding scale related to income level.

Applications for these exemptions must be made annually by Dec. 31 to the Nassau County Department of Assessment, 240 Old Country Road, Mineola, N.Y. 11501. For additional information, please call 571-1500.



# ANNUAL NOTICES

## ASBESTOS MANAGEMENT PLAN

In accordance with AHERA regulation, 40 CFR Part 763.93, the Plainedge School District continues to maintain for public inspection, in the main office of each facility and central administration, a copy of the Asbestos Management Plan in addition to other asbestos-related documentation. For further information about the plan, please call 992-7470.

## PESTICIDE NOTIFICATION

A New York State law went into effect July 1, 2001 requiring schools to inform all staff, parents and guardians that pesticides may be used periodically through the school year. We are required to maintain a list of staff or parents who wish to receive 48-hour prior written notification of pesticide applications. If you would like to be notified, or have any questions regarding the legislation, please call 992-7470.

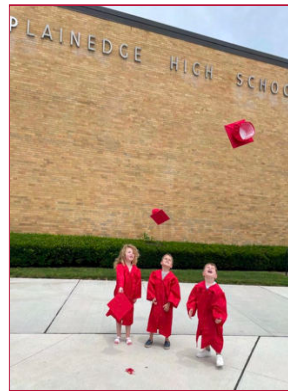
Additional information can be obtained by calling the National Pesticide Information Center, 800-858-7378, or the New York State Health Department Center for Environmental Health, 800-458-1158.

## SEXUAL HARASSMENT POLICY

The Plainedge Board of Education is committed to maintaining a safe and positive learning environment free of sexual harassment of students. The Board condemns all unwelcome behavior of a sexual nature toward students and will take strong disciplinary action if it determines there has been retaliatory behavior against complainants or witnesses. Confidentiality for all persons involved will be respected to the fullest extent possible.

Sexual harassment is defined as unwelcome physical or verbal contacts of a sexual nature, which are designed to extort sexual favors or which have the purpose or effect of creating a demeaning, intimidating, hostile or offensive environment.

Students who believe they have been subjected to sexual harassment, or parents acting on their behalf, are to report the alleged misconduct to their principal, teacher or counselor. Before proceeding to any investigation, a formal complaint form must be submitted by the accuser. Upon receipt of the form, a prompt, thorough and impartial investigation will be conducted. Complaint forms and copies of the policy are available from the principals and the counselors at all schools.



## Directory Information

Unless objection to any of the items of information following is submitted in writing by parents or legal guardians or by students who are over the age of 18 years, the Plainedge School District hereby gives notice of intention to provide, release or publish in the newsletters, on the district's website(s), school or student newspapers, magazines, yearbooks, other publications, lists, daily or weekly newspapers, athletic programs, musical or theatrical programs, social media and news releases (including photos), all of the following information pertaining to students as may be appropriate under the circumstances: name of student, name of parents, address, phone number, age, height, weight, grade, major field of study, participation in recognized school activities, academic honors, achievements, awards, scholarships and similar information.

Under Title 34, Part 99, Privacy Rights of Parents and Students, parents or eligible students who do not desire release of the above information must make a specific request in writing to the superintendent of schools. Failure to make such request shall be deemed consent to release, provide or publish the directory information during the 2024-2025 school year. **Please submit your written request by Oct. 1, 2025.**

# PARENT ORGANIZATIONS

## PTA COUNCIL

### ELECTED OFFICERS

**Co-President:** Kristy McCarthy.....redrose729@hotmail.com

**Co-President:** Laura Ferguson....lferguson711pta@gmail.com

**Vice President:** Vanessa Laverdiere..PTAVanessaL@gmail.com

**Treasurer:** Ariel Ronneburger..aronneburger@gmail.com

**Recording Sec'y:** Brian Maguire..brian.p.maguire33@gmail.com

**Corresponding Sec'y:** Michelle Power.....mpowerpta@gmail.com

### UNIT PRESIDENTS

**Eastplain** ..... Julie Jolion

Jason Kearney

**John H. West**.....Ann Marie Brandstetter

Stefanie Breitfeller

**Charles E. Schwarting**.....Kristy McCarthy

Michelle Powers

**Plainedge Middle School** ..... Kathleen McEnroe

**Plainedge High School**.....Cynthia Bianchi

Laura Ferguson

### DISTRICTWIDE PTA EVENTS

TBD

## MUSIC PARENTS CLUB

The Music Parents Club meets monthly at the High School at 7:30 p.m. For more information, please contact:

Kerry Worzel .....kerry.worzel@nfl.com

Deborah Emanuele.....

### Schedule of Events

#### Meeting Dates (HS Cafeteria)

TBD



## PLAINEDGE HIGH SCHOOL PTSA

### ELECTED OFFICERS\*

**Co- Presidents:** Cynthia Bianchi.....cbianchi@kw.com

Laura Ferguson....lferguson711pta@gmail.com

**1st VP:** Joseph Ricci.....joneen42@gmail.com

**2nd VP:** Fiona McEnroe.....fionamcenroe@gmail.com

**Treasurer:** Christine Coffey.....cryanccoffey2@gmail.com

**Corresponding Sec'y:** Maeve McEnroe..maevemcenroe9@gmail.com

**Recording Sec'y:** Heather Winter...heatherwinters32@gmail.com

## PLAINEDGE MIDDLE SCHOOL PTA

### ELECTED OFFICERS\*

**President:** Kathleen McEnroe.....kmcenroeppta@gmail.com

**Vice President:** Tara. Schneider..... tara.schneider4281@gmail.com

**Vice President:** Laura Denning.....lauradenningpta@gmail.com

**Treasurer:** Ariel Ronneburger.....aronneburger@gmail.com

**Secretary:** April Meyer.....aaprigliano@gmail.com

### Schedule of Events

TBD

# PARENT-TEACHER ASSOCIATION

## CHARLES E. SCHWARTING ELEMENTARY SCHOOL

### ELECTED OFFICERS\*

**Co-President:** Kristy McCarthy.....redrose729@hotmail.com  
**Co-President:** Michelle Power.....mpowerpta@gmail.com  
**1st Vice President:** Stephanie Meehan...smeehanpta@gmail.com  
**2nd Vice President:** Michelle Plett.....mplettpta@gmail.com  
**Treasurer:** Doreen McArdle.....dmcardlepta@gmail.com  
**Recording Sec'y:** Maria Power.mariapowerpta@gmail.com  
**Corresponding Sec'y:** Lisa Scarola.....lscarolapta@gmail.com

### Schedule of Events

TBD

#### Meetings

9/15 @ 7PM  
 11/19 @ 7PM  
 1/7 @ 7PM  
 3/12 @ 7 PM  
 4/7 @ 7 PM  
 5/6 @ 7PM  
 6/3 @ 7PM

## EASTPLAIN ELEMENTARY SCHOOL

### ELECTED OFFICERS\*

**Co-President:** Julie Jolion.....jmf4897@aol.com  
**Co-President:** Jason Kearney..... kearneyj365@gmail.com  
**Co-Vice President:** Joanna Cervini.....jcervini11@gmail.com  
**Co-Vice President:** Andrea Bruccia.....abrucia1024@gmail.com  
**Treasurer:** Brian Maguire.....brian.p.maguire33@gmail.com  
**Recording Sec'y:** Judith Maguire.....heyjudge0675@aol.com  
**Corresponding Sec'y:** Jackieoodman.....jgoodman1226@gmail.com

### Schedule of Events

9/5 - Welcome Back Party  
 9/30 - Fall Book Fair  
 10/8 - Picture Day  
 10/21 - Pumpkin Patch  
 10/24 - Halloween Party  
 10/27 - Red Ribbon Week Begins  
 10/31 - Pie Sale  
 11/1 - Book Fairies Book Drive  
 11/3 - Food Drive  
 11/19 - Picture Retake Day  
 12/16 - Holiday Boutique  
 3/24 - Spring Book Fair  
 6/5 - Field Day  
 6/10 - BOGO Book Fair

#### Meetings

9/17 @ 7 PM  
 11/12 @ 7 PM  
 1/21 @ 7 PM  
 3/25 @ 7 PM  
 5/20 @ 7 PM

## JOHN H. WEST ELEMENTARY SCHOOL

### ELECTED OFFICERS\*

**Co-President:** Anne-Marie Brandstetter.....abwestpta@gmail.com  
**Co-President:** Stefanie Breitfeller.....stefanieb0508@gmail.com  
**1st Vice President:** Allison Marziliano...allison.marziliano@gmail.com  
**2nd Vice President:** Ariel Ronneburger.....aronneburger@gmail.com  
**Treasurer:** Caitlin Epstein.....bergecaitlin@yahoo.,com  
**Recording Sec'y:** Meagan Palazzo.....meagan.daubman@gmail.com  
**Corresponding Sec'y:** Heather Winters...heatherwinters32@gmail.com

### Schedule of Events

9/5 - Back to School Event  
 9/5 - Teacher Appreciation Lunch  
 9/8-9/19 - Fall Fundraiser  
 10/1 - Custodian Appreciation Day  
 10/10 - Picture Day  
 10/10 - Passing the Torch  
 10/20-10/22 - Book Fair  
 10/24 - Halloween Party  
 10/27 - Red Ribbon Week Begins  
 11/25 - Picture Retake Day  
 12/8-12/12 - Holiday Boutique  
 1/9 - WINGO  
 2/6 - Broadway West  
 2/27 - Special Persons Dance  
 3/2-3/6 - Spring Book Fair  
 3/13 - Dapper Day  
 3/9-3/27 - PARP  
 3/27 - 5th Grade Tea  
 5/4-5/8 - Parents' Day Boutique  
 5/4-5/8- Teacher Appreciation Week  
 5/29 Field Day  
 6/1 - Field Day (Rain Date)  
 6/12 - 5th Grade Dance  
 6/24 - Moving Up

#### Meetings

9/18 @ 6:30 PM  
 11/12 @ 7PM  
 1/22 @ 7 PM  
 3/5 @ 7 PM  
 5/13 @ 7PM

JULY 2025

S	M	T	W	T	F	S
		1	2	3	4	5
6	7	8	9	10	11	12
13	14	15	16	17	18	19
20	21	22	23	24	25	26
27	28	29	30	31		

# AUGUST 2025

SEPTEMBER 2025

S	M	T	W	T	F	S
	1	2	3	4	5	6
7	8	9	10	11	12	13
14	15	16	17	18	19	20
21	22	23	24	25	26	27
28	29	30				

SUNDAY	MONDAY	TUESDAY	WEDNESDAY	THURSDAY	FRIDAY	SATURDAY
					1	2
3	4	5	6	7	8	9
10	11	12 BOE Special Meeting @ 8 AM (HS ILC)	13	14	15	16
17	18	19 August Regents	20 BOE Meeting @ 7:30 PM (HS ILC)	21 Pre-K Orientation Sch @ 9AM EP @ 11AM MS @ 1PM MS 6 <sup>th</sup> Grade Orientation @ 9AM	22	23 HS SAT @ 7:30 AM (Off Site)
24	25 New Teacher Institute	26 MS Bound Camp	27 EP/Sch/JHW Sail into Kindergarten @ 8:30AM HS 9 <sup>th</sup> Grade Orientation @ 9:30AM	28 Superintendent's Conference Day	29	30
31						

AUGUST 2025

S	M	T	W	T	F	S
					1	2
3	4	5	6	7	8	9
10	11	12	13	14	15	16
17	18	19	20	21	22	23
24	25	26	27	28	29	30
31						

OCTOBER 2025

S	M	T	W	T	F	S
			1	2	3	4
5	6	7	8	9	10	11
12	13	14	15	16	17	18
19	20	21	22	23	24	25
26	27	28	29	30	31	

# SEPTEMBER 2025

SUNDAY	MONDAY	TUESDAY	WEDNESDAY	THURSDAY	FRIDAY	SATURDAY
	1 <b>Labor Day Schools Closed</b>	2 <b>FIRST DAY OF SCHOOL FOR ALL STUDENTS</b>	3	4	5 HS Senior Breakfast @ 6:45AM	6 HS ACT @ 7:30 AM (Off Site)
7 HS Mini Fair @ 12:40PM MS Back to School Night @ 6PM	8	9 HS Senior College Planning Night @ 7PM	10 Pre-K Back to School Night @ 5PM EP/Sch/JHW Back to School Night @ 6PM	11	12 BOE Special Meeting @ 8:30 PM (HS ILC)	13 HS SAT @ 7:30 AM (Off Site)
14 HS Mini Fair @ 10AM Sch PTA Meeting @ 6:30PM HS Senior Parking Night @ 7PM	15	16 BOE Meeting @ 7:30 PM (HS ILC)	17 EP PTA Meeting @ 7PM HS PTSA Meeting @ 7PM	18 JHW PTA Meeting @ 6:30PM	19	20
21	22	23 <b>Rosh Hashanah (DRO)* – Schools Closed</b>	24	25	26 MS 6 <sup>th</sup> Grade Field Day	27
28	29 MS PTA Meeting @ 6PM	30				

\*Days of Religious Observance

SEPTEMBER 2025

S	M	T	W	T	F	S
	1	2	3	4	5	6
7	8	9	10	11	12	13
14	15	16	17	18	19	20
21	22	23	24	25	26	27
28	29	30				

# OCTOBER 2025

NOVEMBER 2025

S	M	T	W	T	F	S
						1
2	3	4	5	6	7	8
9	10	11	12	13	14	15
16	17	18	19	20	21	22
23	24	25	26	27	28	29
30						

SUNDAY	MONDAY	TUESDAY	WEDNESDAY	THURSDAY	FRIDAY	SATURDAY
			1	2 <b>Yom Kippur (DRO)* Schools Closed</b>	3	4 HS SAT @ 7:30 AM (PHS)
5	6	7	8	9 HS Junior Post-HS Kickoff @ 7PM	10	11 HS PSAT @ 7:30 AM (PHS)
12	13 <b>Columbus Day Schools Closed</b>	14 Sukkot (DRO)*	15 EP Picture Day	16 Law Enforcement & First Responders Day	17 JHW Picture Day	18 HS ACT @ 7:30 AM (Off Site)
19 Making Strides Against Breast Cancer Walk @ 8AM (Jones Beach Field 5)	20 Diwali (DRO)*	21 Shemini Atzeret (DRO)*	22 Simchat Torah (DRO)*	23 HS Financial Aid Night @ 7PM	24 HS Pep Rally @ 1:15PM 12th Grade Passing of the Torch to Kindergarten @ 6:30 PM (HS Field) HS Homecoming @ 6:30PM	25
26	27 HS Safe Halloween @ 6PM	28 MS Guidance Night Gr 6 - 8 @ 6PM	29 HS Picture Retake Day	30 HS Parent/Teacher Conferences @ 6PM	31	
<b>District Red Ribbon Week</b>						<b>Halloween</b>

\*Days of Religious Observance







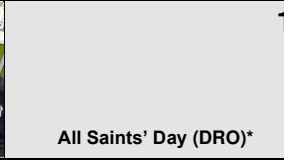





OCTOBER 2025

S	M	T	W	T	F	S
			1	2	3	4
5	6	7	8	9	10	11
12	13	14	15	16	17	18
19	20	21	22	23	24	25
26	27	28	29	30	31	

# NOVEMBER 2025

DECEMBER 2025

S	M	T	W	T	F	S
	1	2	3	4	5	6
7	8	9	10	11	12	13
14	15	16	17	18	19	20
21	22	23	24	25	26	27
28	29	30	31			

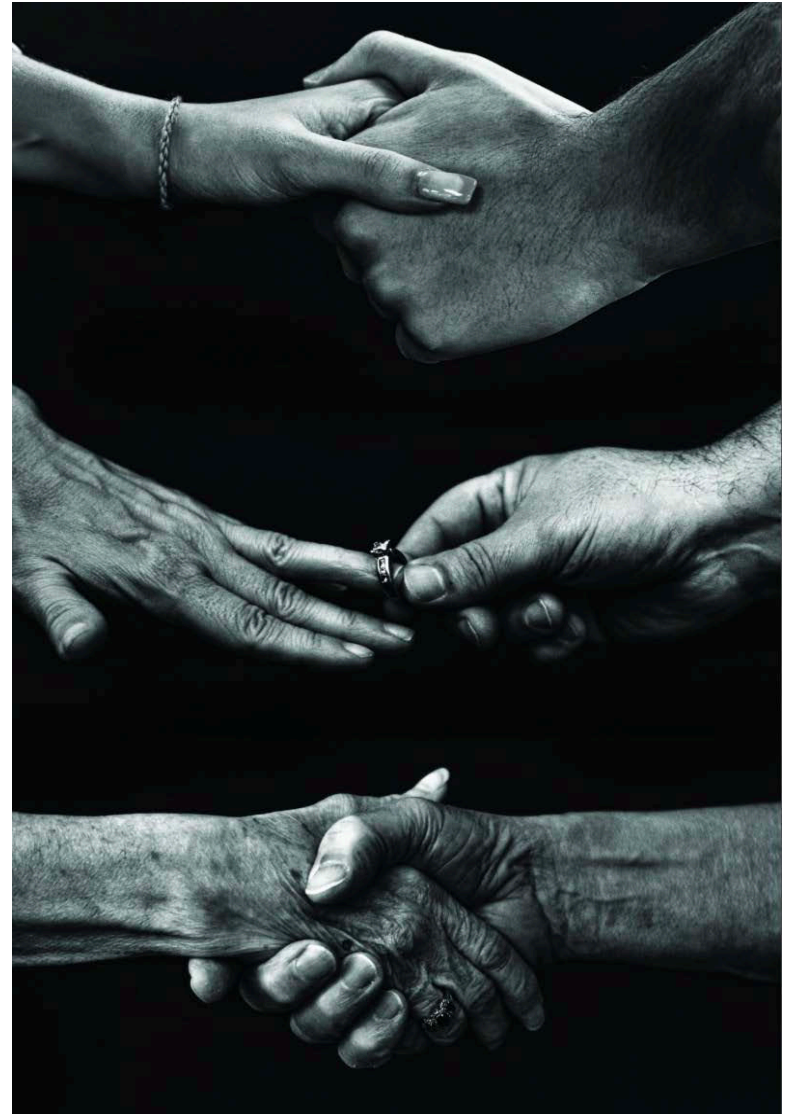
SUNDAY	MONDAY	TUESDAY	WEDNESDAY	THURSDAY	FRIDAY	SATURDAY
						
Daylight Savings Time Ends	Edge Of The STEAM Arcade PHS Commons @ 5:30pm-6:50pm	Superintendent's Day – Schools Closed for Students	Sch PTA Meeting @ 7PM EP PTA Meeting @ 7PM	HS Parent/Teacher Conferences @ 6PM	HS/MS Quarter 1 Ends	All Saints' Day (DRO)* HS SAT @ 7:30 AM (Off Site)
		Veterans Day Schools Closed	Harlem Wizards Game @ 6:30 PM (HS Gym)	HS PTSA Meeting @ 7PM District Art Show @ 6PM (BMAC)	EP/Sch/JHW Half Day Dismissal @ 12PM EP/Sch/JHW Parent/ Teacher Conferences @ 1PM Pre-K half day dismissal @11AM HS/MS Report Cards Released	
	HS College Testing Night @ 7PM JHW PTA Meeting @ 7PM	MS Dismissal @ 11:15AM MS Parent/Teacher Conferences @ 12:30PM BOE Meeting @ 7:30 PM (HS ILC)	EP/Sch/JHW Half Day Dismissal @ 12PM EP/Sch/JHW Parent/ Teacher Conferences @ 1PM EP/Sch/JHW Parent/ Teacher Conferences @ 6PM Pre-K half day dismissal @11AM EP Picture Retake Day	MS Parent/Teacher Conferences @ 6PM		
Elementary Bright Futures Week						
		MS PTA Meeting @ 6PM JHW Picture Retake Day Sch Picture Retake Day MS Retake and Club Picture Day	RAPID DISMISSAL	Thanksgiving Day	Thanksgiving Recess – Schools Closed	
						

\*Days of Religious Observance

Sabeeka Waheed - 12th Grade



Erin Ludwig - 11th Grade



S	M	T	W	T	F	S
						1
2	3	4	5	6	7	8
9	10	11	12	13	14	15
16	17	18	19	20	21	22
23	24	25	26	27	28	29
30						

# DECEMBER 2025

S	M	T	W	T	F	S	
					1	2	3
4	5	6	7	8	9	10	
11	12	13	14	15	16	17	
18	19	20	21	22	23	24	
25	26	27	28	29	30	31	

SUNDAY	MONDAY	TUESDAY	WEDNESDAY	THURSDAY	FRIDAY	SATURDAY
	1 HS Concert I @ 7PM	2 HS Concert II @ 7PM	3	4	5 Elementary End of 1st Trimester	6 HS SAT @ 7:30 AM (Off Site)
	PRE-K REGISTRATION			NYSSMA All State Festival @ Rochester		
7 NYSSMA All State Festival @ Rochester	8 MS 8 <sup>th</sup> Grade Concert @ 7PM Feast of the Immaculate Conception (DRO)*	9	10 HS 9 <sup>th</sup> Grade Guidance Night @ 6:30PM HS Curriculum Night @ 7PM	11 Annual Season of Lights @BMAC 6:00PM	12 HS Fall Play @ 7PM	13 HS ACT @ 7:30 AM (Off Site) HS Fall Play @ 7PM
	PRE-K REGISTRATION					
14 Hanukkah Begins (DRO)*	15 MS 7 <sup>th</sup> Grade Concert @ 7PM	16 Elementary School Report Cards BOE Meeting @ 7:30 PM (HS ILC)	17 MS 6 <sup>th</sup> Grade Concert @ 7PM	18 Pre-K Lottery @ 4PM (HS Auditorium)	19	20
21	22 Hanukkah Ends (DRO)*	23	24 Holiday Recess – Schools Closed		25	26
			Christmas Eve	Christmas Day (DRO)*	Kwanzaa Begins	
28	29 Holiday Recess – Schools Closed		30	31 New Year's Eve		

\*Days of Religious Observance



Alina Arjoon - 8th Grade

S	M	T	W	T	F	S
	1	2	3	4	5	6
7	8	9	10	11	12	13
14	15	16	17	18	19	20
21	22	23	24	25	26	27
28	29	30	31			

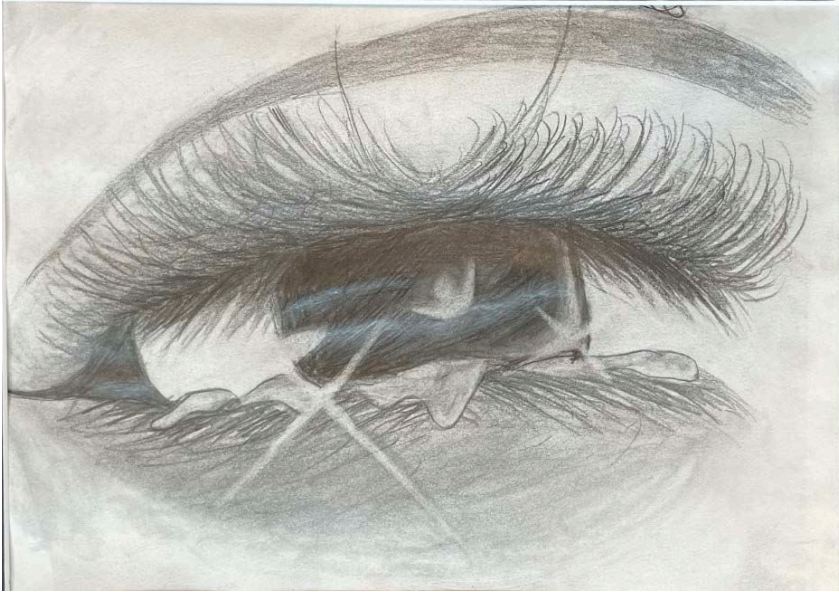
S	M	T	W	T	F	S
1	2	3	4	5	6	7
8	9	10	11	12	13	14
15	16	17	18	19	20	21
22	23	24	25	26	27	28

# JANUARY 2026

SUNDAY	MONDAY	TUESDAY	WEDNESDAY	THURSDAY	FRIDAY	SATURDAY
				New Year's Day 1  Kwanzaa Ends	2  <b>Holiday Recess – Schools Closed</b>	3
4	5	6 JHW Senior Concert @ 7PM (HS Auditorium)  Feast of the Epiphany (DRO)*	7 Sch PTA Meeting @ 7PM  Christmas – Eastern Orthodox (DRO)*	8	9	10
11	12 HS Senior Parking Night @ 7PM	13 Sch Senior Concert @ 7PM (HS Auditorium)	14	15  EP Senior Concert @ 7PM (HS Auditorium)	16	17
18	19 <b>Martin Luther King's Birthday – Schools Closed</b>	20 Kindergarten Registration Opens BOE Meeting @ 7:30 PM (HS ILC)	21 Sch Junior Concert @ 7PM (HS Auditorium) EP PTA Meeting @ 7PM	22 JHW PTA Meeting @ 7PM	23 HS/MS Quarter 2 Ends	24
<b>District Regents / Mid-Term Testing</b>						
25	26 EP Junior Concert @ 7PM (HS Auditorium)	27 MS PTA Meeting @ 6PM HS PTSA Meeting @ 7PM ( HS Cafeteria)	28 JHW Junior Concert @ 7PM (HS Auditorium)	29 PTA President/ Principal Dinner	30 HS/MS Report Cards Released	31
<b>Great Kindness Week @ Elementary Schools</b>						

\*Days of Religious Observance

**Abrielle Schiano - 6th Grade**



**Mia Pellegrino - 5th Grade**



S	M	T	W	T	F	S
				1	2	3
4	5	6	7	8	9	10
11	12	13	14	15	16	17
18	19	20	21	22	23	24
25	26	27	28	29	30	31

# FEBRUARY 2026

S	M	T	W	T	F	S
1	2	3	4	5	6	7
8	9	10	11	12	13	14
15	16	17	18	19	20	21
22	23	24	25	26	27	28
29	30	31				

SUNDAY	MONDAY	TUESDAY	WEDNESDAY	THURSDAY	FRIDAY	SATURDAY
1	2	3	4 EP/Sch/JHW World Read Aloud Day/Global Day of Play HS Summa Cum Laude Breakfast @ 7AM HS Grade 11 College Night Panel @ 7PM	5 District Art Show @ 7PM (BMAC)	6 JHW Drama Production @ 7PM (MS Auditorium)	7
8	9	10 BOE Meeting @ 7:30 PM (HS ILC)	11	12 HS Best Buddies Fashion Show @ 6PM	13 P.S. Love You Day	14 HS ACT @ 7:30 AM (Off Site)  Valentine's Day
15	16 President's Day	17 Lunar New Year	18	19	20	21
Winter Recess – Schools Closed						
22	23	24	25 Ash Wednesday (DRO)* Ramadan Begins (DRO)*	26	27 Sch Drama Production @ 7PM (HS Auditorium)	28

\*Days of Religious Observance

---

**Bryn Banks  
5th Grade**

---



---

**Adriana Gomez  
10th Grade**

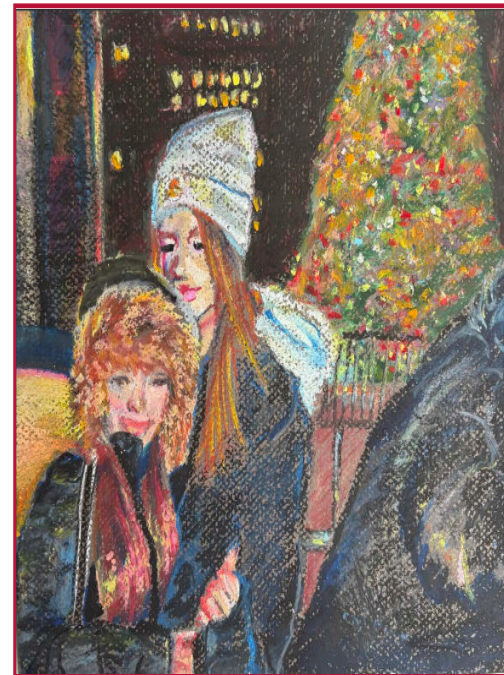
---



---

**Juliana Ronayne  
12th Grade**

---



S	M	T	W	T	F	S
1	2	3	4	5	6	7
8	9	10	11	12	13	14
15	16	17	18	19	20	21
22	23	24	25	26	27	28

S	M	T	W	T	F	S
			1	2	3	4
5	6	7	8	9	10	11
12	13	14	15	16	17	18
19	20	21	22	23	24	25
26	27	28	29	30		

# MARCH 2026



SUNDAY	MONDAY	TUESDAY	WEDNESDAY	THURSDAY	FRIDAY	SATURDAY
1	2 <b>Plainedge String Festival @ 7PM</b> (HS Auditorium)	3 <b>MS PTA Meeting @ 6PM</b> <b>Sch PTA Meeting @ 7PM</b>  Purim (DRO)*	4 <b>Plainedge Band Festival @ 7PM</b> (HS Auditorium)	5 <b>JHW PTA Meeting @ 7PM</b> <b>BOE Special Meeting @ 6:30 PM</b>	6 <b>Elementary End of 2nd Trimester</b>  HS Battle of the Classes @ 2PM	7
8 Daylight Savings Time Begins	9 <b>Plainedge Choral Festival @ 7PM</b> (HS Auditorium) <b>BOE Special Meeting @ 6:30 PM</b>	10 <b>BOE Meeting @ 7:30 PM</b> (HS ILC)	11 <b>HS Tri-M Recital @ 7PM</b> <b>BOE Special Meeting @ 6:30 PM</b>	12 <b>BOE Meeting @ 7:30 PM</b> (HS ILC)	13 <b>MS Drama Production @ 7PM</b>  NYSSMA Solo Festival @ Farmingdale HS	14 <b>HS SAT @ 7:30 AM</b> (Off Site) <b>MS Drama Production @ 2PM</b> <b>MS Drama Production @ 7PM</b>
15	16	17 <b>Elementary Schools Reports Cards Available</b>  St. Patrick's Day (DRO)*	18 <b>HS SAT School Day</b> <b>MS International Day @ 3PM</b> <b>BOE Special Meeting @ 6:30 PM</b>  High School International Week	19 <b>EP/Sch/JHW Half Day Dismissal @ 12PM</b> <b>EP/Sch/JHW Parent/ Teacher Conferences @ 1PM</b> <b>EP/Sch/JHW Parent/ Teacher Conferences @ 6PM</b> <b>HS PTSA Meeting @ 7PM</b> <b>Pre-K half day dismissal @ 11AM</b>	20 <b>World Down Syndrome Day</b>  Eid Al-Fitr (DRO)*	21
22	23 <b>HS College and Career Fair @ 7PM</b>	24 <b>BOE Meeting @ 7:30 PM</b> (HS ILC)	25 <b>EP PTA Meeting @ 7PM</b>	26 <b>HS Spring Musical @ 7PM</b> <b>BOE Special Meeting @ 6:30 PM</b>	27 <b>HS Spring Musical @ 7PM</b>  NYSSMA All State Festival @ Division Ave HS	28 <b>HS Spring Musical @ 1PM</b> <b>HS Spring Musical @ 7PM</b>
29  Palm Sunday (DRO)*	30 <b>MS Grade 5 Orientation @ 6PM</b>	31				

\*Days of Religious Observance

S	M	T	W	T	F	S
1	2	3	4	5	6	7
8	9	10	11	12	13	14
15	16	17	18	19	20	21
22	23	24	25	26	27	28
29	30	31				

# APRIL 2026

S	M	T	W	T	F	S
						1 2
3	4	5	6	7	8	9
10	11	12	13	14	15	16
17	18	19	20	21	22	23
24	25	26	27	28	29	30
31						

SUNDAY	MONDAY	TUESDAY	WEDNESDAY	THURSDAY	FRIDAY	SATURDAY
			<b>1</b> Autism Acceptance Day EP/SCH/JHW Half Day – Noon Dismissal Pre-K Half Day Dismissal @11AM	Holy Thursday (DRO)* <b>2</b> <div style="border: 1px solid red; padding: 5px; text-align: center; margin: 10px 0;">Spring Recess – Schools Closed</div> Passover Begins (DRO)*	Good Friday (DRO)* <b>3</b>	<b>4</b>
<b>5</b> Easter Sunday (DRO)*	<b>6</b> Easter Monday (DRO)*	<b>7</b>	<b>8</b>	<b>9</b>	<b>10</b>	<b>11</b> HS ACT @ 7:30 AM (Off Site)
<div style="border: 1px solid red; padding: 5px; display: inline-block;">Spring Recess – Schools Closed</div>						
<b>12</b> Easter Sunday – Eastern Orthodox (DRO)*	<b>13</b>	<b>14</b> Grade 8 ELA Exam	<b>15</b> Grade 5 ELA Exam BOE Meeting @ 7:30 PM (HS ILC)	<b>16</b> Grade 7 ELA Exam Grade 4 ELA Exam	<b>17</b> HS Academic Awards @ 7PM Grade 6 ELA Exam	<b>18</b> HS/MS Quarter 3 Ends
<b>19</b> Last Day for Submitting Nomination Petitions for the Board of Education by 5PM (District Clerk's Office) HS National Honor Society Induction @ 7PM	<b>20</b>	<b>21</b> BOE Meeting @ 7:30 PM (HS ILC)	<b>22</b> We Make A Difference Awards Elementary @ 6:00 PM at PHS MS/ HS @ 7:30 PM at PHS	<b>23</b> HS Incoming 9 <sup>th</sup> Grade Orientation @ 7PM	<b>24</b> HS/MS Report Cards Released	<b>25</b> Student Robot Connection
<b>26</b>	<b>27</b>	<b>28</b> Grade 6 Math Exam Grade 3 Math Exam	<b>29</b> Grade 8 Math Exam Grade 4 Math Exam	<b>30</b> Grade 7 Math Exam Grade 5 Math Exam		

\*Days of Religious Observance

# MAY 2026

S	M	T	W	T	F	S
			1	2	3	4
5	6	7	8	9	10	11
12	13	14	15	16	17	18
19	20	21	22	23	24	25
26	27	28	29	30		

S	M	T	W	T	F	S
	1	2	3	4	5	6
7	8	9	10	11	12	13
14	15	16	17	18	19	20
21	22	23	24	25	26	27
28	29	30				

SUNDAY	MONDAY	TUESDAY	WEDNESDAY	THURSDAY	FRIDAY	SATURDAY
					Grade 7 Math Exam <b>1</b> Grade 5 Math Exam NYSSMA Jazz Solo Festival @ Syosset HS HS Junior Prom	<b>2</b> HS SAT @ 7:30 AM (Off Site)
<b>3</b>	<b>4</b> Sch PTA Meeting @ 7PM MS 8th Grade Concert @ 7PM	<b>5</b>	<b>6</b> MS 7th Grade Concert @ 7PM	<b>7</b> District Art Show @ 7PM (BMAC)	<b>8</b>	<b>9</b>
High School AP Exams						
<b>10</b>	Grade 5 Science Exam <b>11</b> Grade 8 Science Exam MS 6th Grade Concert @ 7PM	<b>12</b> BOE Meeting @ 7:30 PM (HS ILC)	<b>13</b> JHW PTA Meeting @ 7PM	<b>14</b> HS Spring Concert I @ 7PM Ascension Thursday (DRO)*	<b>15</b> EP Drama Production @ 7PM (HS Auditorium)	<b>16</b>
High School AP Exams						
<b>17</b>	<b>18</b>	<b>19</b> Annual Budget Vote & Trustee Election @ 6AM-9PM (HS Gym) STEAM Night	<b>20</b> EP PTA Meeting @ 7PM HS PTSA Meeting @ 7PM	<b>21</b> HS Spring Concert II @ 7PM	<b>22</b> Shavuot (DRO)*	<b>23</b> Shavuot (DRO)*
<b>24</b>	<b>25</b> Memorial Day Schools Closed	<b>26</b>	<b>27</b> Eid al-Adha (DRO)* Schools Closed	<b>28</b> MS National Junior Honor Society Induction @ 7PM	<b>29</b> JHW Field Day @ 9:30AM	<b>30</b>
<b>31</b>						

\*Day of Religious Observance

S	M	T	W	T	F	S
					1	2
3	4	5	6	7	8	9
10	11	12	13	14	15	16
17	18	19	20	21	22	23
24	25	26	27	28	29	30
31						

S	M	T	W	T	F	S
			1	2	3	4
5	6	7	8	9	10	11
12	13	14	15	16	17	18
19	20	21	22	23	24	25
26	27	28	29	30	31	

# JUNE 2026

SUNDAY	MONDAY	TUESDAY	WEDNESDAY	THURSDAY	FRIDAY	SATURDAY
	<b>1</b> JHW Field Day (Rain Date) JHW Senior Concert @ 7PM (HS Auditorium)	<b>2</b> HS Scholastic Awards @6PM (HS Auditorium)	<b>3</b> EP Senior Concert @ 7PM (HS Auditorium)	<b>4</b> Sch Senior Concert @ 7PM (HS Auditorium)	<b>5</b> EP Field Day @ 9:30AM MS 8 <sup>th</sup> Grade Dance @ 7PM	<b>6</b> HS SAT Exam @ 7:30AM (PHS)
<b>7</b>	<b>8</b> EP Field Day (Rain Date) Sch Junior Concert @ 7PM (HS Auditorium)	<b>9</b> MS Awards Night @ 7PM	<b>10</b> MS PRE-K Field Day @10AM Pre-K Field Day @ 1PM Sch PTA Meeting @ 7PM JHW Junior Concert @ 7PM (HS Auditorium)	<b>11</b> EP Junior Concert @ 7PM (HS Auditorium)	<b>12</b> Sch Field Day @ 9:30AM EP/Sch/JHW Half Day Dismissal @ 12:00PM Pre-K Half Day Dismissal @11AM	<b>13</b> HS ACT @ 7:30 AM (Off Site)
<b>14</b>	<b>15</b> Sch Field Day (Rain Date)	<b>16</b> HS/MS Quarter 4 Ends BOE Meeting @ 7:30 PM (HS ILC)	<b>17</b> Pre-K Field Day (Rain Date) @ 1PM MS PRE-K Field Day (Rain Date) @ 10AM PTA/PFT Urban Air Fundraiser Event 5 PM – 8 PM	<b>18</b> Pre-K Moving Up @ 9AM (HS Auditorium) Pre-K Moving Up @ 11AM (HS Auditorium) Pre-K Moving Up @ 1PM (HS Auditorium)	<b>19</b> <div style="border: 1px solid red; padding: 5px; text-align: center;">Juneteenth Schools Closed</div>	<b>20</b>
<b>21</b>	<b>22</b> HS Graduation Rehearsal @ 10AM (HS Auditorium) JHW PTA Meeting @ 7PM	<b>23</b>	<b>24</b> JHW Moving Up @ 9AM (HS Auditorium) Sch Moving Up @ 11AM (HS Auditorium) EP Moving Up @ 1PM (HS Auditorium) HS Prom	<b>25</b> MS Session 1 Moving Up @ 11AM (HS Auditorium) MS Session 2 Moving Up @ 1PM (HS Auditorium) HS Graduation @ 7PM (Hofstra University)	<b>26</b> Last Day of School for All Students EP/Sch/JHW Dismissal @ 10:10AM Elementary End of 3 <sup>rd</sup> Trimester	<b>27</b>
<b>28</b>	<b>29</b> All Report Cards Available for Viewing	<b>30</b>				

# Chain of Communication

General Information: (516) 992-7450  
District Security: (516) 992-7492

## WHO DO I CALL WITH A QUESTION OR SUGGESTION?

The Plainedge School District's communication protocols help to promote direct, open and respectful interactions so that problems and concerns can be worked out quickly and efficiently. The communication protocol starts with the staff member closest to the situation, as that person will usually have the most information. At times, additional personnel are required to resolve specific situations. Appropriate communication channels for a variety of topics are listed below. The district encourages any and all questions from parents and residents regarding school matters.

## ATHLETICS

Step 1: Coach; if not resolved...  
Step 2: Mr. Brian Sacks, Director of Athletics if not resolved...  
Step 3: Carol Muscarella, Interim Superintendent of Schools

## ATHLETICS - SCHEDULING THE USE OF FIELDS & GYMS

Step 1: Mr. Brian Sacks, Director of Athletics; if not resolved...  
Step 2: Mr. Brett Prochazka, Director of Facilities; if not resolved...  
Step 3: Carol Muscarella, Interim Superintendent of Schools

## BUDGET

Step 1: Mr. Peter Porrazzo, Assistant Superintendent for Business if not resolved...  
Step 2: Carol Muscarella, Interim Superintendent of Schools

## BUILDINGS - SCHEDULING THE USE OF FACILITIES BY GROUPS

Step 1: Building Administrator; if not resolved...  
Step 2: Mr. Brett Prochazka, Director of Facilities; if not resolved...  
Step 3: Mr. Peter Porrazzo, Assistant Superintendent for Business; if not resolved...  
Step 4: Carol Muscarella, Interim Superintendent of Schools

## CLASSROOM ISSUES INVOLVING AN INDIVIDUAL CHILD OR CURRICULUM AND INSTRUCTION

For matters involving classroom procedures, behavior, grades, schedule, etc. OR subject matter being taught, teaching strategies, textbooks and materials used, etc:

Step 1: Classroom Teacher; if not resolved...  
Step 2: Building Administrator; if not resolved...  
Step 3: Dr. Lisa DePaola, Assistant Superintendent for Curriculum and Instruction; if not resolved...  
Step 4: Carol Muscarella, Interim Superintendent of Schools

## EMPLOYMENT AND CERTIFICATION

Step 1: Joseph A. Maisano, Assistant Superintendent for HR not resolved...  
Step 2: Carol Muscarella, Interim Superintendent of Schools

## GUIDANCE

For Grades K-5:  
Step 1: Teacher; if not resolved...  
Step 2: School Psychologist; if not resolved...  
Step 3: Building Administrator; if not resolved...  
Step 4: Dr. Lisa DePaola, Assistant Superintendent for Curriculum and Instruction; if not resolved...  
Step 5: Carol Muscarella, Interim Superintendent of Schools

For Grades 6-12:  
Step 1: Teacher; if not resolved...  
Step 2: Guidance Counselor; if not resolved...  
Step 3: Building Administrator; if not resolved...  
Step 4: Mr. Greg Wasserman, Director of Guidance; if not resolved...  
Step 5: Dr. Lisa DePaola, Assistant Superintendent for Curriculum and Instruction; if not resolved...  
Step 6: Carol Muscarella, Interim Superintendent of Schools

## MEDICAL CONCERNS, K-12

Step 1: School Nurse; if not resolved...  
Step 2: Building Administrator; if not resolved...  
Step 3: Mr. Greg Wasserman, Director of Guidance; if not resolved...  
Step 4: Carol Muscarella, Interim Superintendent of Schools

## OTHER SCHOOL ACTIVITIES

Step 1: Activity Advisor; if not resolved...  
Step 2: Building Administrator; if not resolved...  
Step 3: Dr. Lisa DePaola, Assistant Superintendent for Curriculum and Instruction; if not resolved...  
Step 4: Carol Muscarella, Interim Superintendent of Schools

## REGISTRATION AND RESIDENCY

Step 1: Registrar; if not resolved...  
Step 2: Dr. Lisa DePaola, Assistant Superintendent for Curriculum and Instruction; if not resolved...  
Step 3: Carol Muscarella, Interim Superintendent of Schools

## SCHOOL PERSONNEL

Step 1: Building Administrator; if not resolved...  
Step 2: Joseph A. Maisano, Assistant Superintendent for HR if not resolved...  
Step 3: Carol Muscarella, Interim Superintendent of Schools

## SPECIAL EDUCATION

For Grades K-12:  
Step 1: Teacher; if not resolved...  
Step 2: Building Administrator; if not resolved...  
Step 3: Ms. Bridget Murphy, Director of Special Education; if not resolved...  
Step 4: Dr. Lisa DePaola, Assistant Superintendent for Curriculum and Instruction; if not resolved...  
Step 5: Carol Muscarella, Interim Superintendent of Schools

## TRANSPORTATION

Pickup, route concerns:  
Step 1: Supervisor of Transportation; if not resolved...  
Step 2: Mr. Peter Porrazzo, Assistant Superintendent for Business; if not resolved...  
Step 3: Carol Muscarella, Interim Superintendent of Schools

Behavior on school buses, etc.  
For Grades K-12:  
Step 1: Bus Driver; if not resolved...  
Step 2: Building Administrator; if not resolved...  
Step 3: Dr. Lisa DePaola, Assistant Superintendent for Curriculum and Instruction; if not resolved...  
Step 4: Carol Muscarella, Interim Superintendent of Schools

If your issue has not been resolved after following ALL of the appropriate steps in the communication protocol, then please write to the Board of Education.

PLAINEDGE  
PUBLIC SCHOOLS



ON  
SOCIAL MEDIA



@PlainedgeUFSD



(516) 992-7450

[www.plainedgeschools.org](http://www.plainedgeschools.org)

**P**LAINEDGE  
FITNESS CENTER

#Sign Up for a  
free resident membership



@PlainedgeUFSD