



Plainedge Middle School

200 Stewart Avenue

Bethpage, N.Y. 11714

Telephone: 516-992-7650

Fax: 516-992-7645

www.plainedgeschools.org

Curriculum Guide and Handbook 2022-2023

Plainedge Middle School Mission Statement

As members of the Plainedge Middle School community, we are committed to providing a developmentally responsive, supportive learning environment in which students achieve at their highest levels. We are committed to facilitating the transition from childhood to young adolescence and developing increasingly independent learners in a nurturing school environment that builds respect for self and others.

Board of Education

Catherine Flanagan, President
Raymond Paris, Vice-President
Jennifer Maggio
Dr. Lynnda Nadien
Dr. Joseph Netto
Sonny Spagnuolo
Sisi Wong Townson

Central Administration

Dr. Edward A. Salina, Jr., Superintendent of Schools
Dr. Guy J. Le Vaillant, Deputy Superintendent
Dr. Lisa DePaola, Assistant Superintendent for Curriculum and Instruction
Catherine Honeyman, Assistant Superintendent for Curriculum and Instruction
Peter Porrazzo, Assistant Superintendent for Business and Administration

Building Administration

Anthony DeRiso, Principal
Jennifer Wiesman, Assistant Principal
Vito Mannino, Assistant Principal

Department Administration

Bridget Murphy, Director of Special Education
Nicole Duffy, Assistant Director of Special Education
T.J. Burke, Director of Health, Physical Education, and Athletics
Verdel Jones, Director of Guidance and Student Support Services
Ananina Kletzkin, Curriculum Associate
Samantha Cartusciello, Curriculum Associate

Bully Prevention Statement

Everyone at Plainedge Middle School is committed to creating and maintaining a nurturing school environment that builds respect for self and others. We will treat each other with respect, and we will refuse to tolerate bullying in any form. It is our belief that bullying is the participation in any behavior that causes physical, emotional, or social damage to others.

WELCOME TO A NEW SCHOOL YEAR AT PLAINEDGE MIDDLE SCHOOL

What is Middle School?

Middle schools are developed to suit the needs of adolescents in both academic and social areas. Our classes are grouped heterogeneously. In addition, students are programmed with a team of teachers for core academic areas. This helps to provide a sense of belonging for children and allows teachers to meet the individual needs of their students. Enrichment and academic intervention services for children at Plainedge are provided through integrated blocks of time during the school day. We are all here as a team to support your child.

Contact Information

| | | |
|-----------------------|---------------------|----------------|
| Mr. Anthony DeRiso | Principal | (516) 992-7665 |
| Ms. Jennifer Wiesman | Assistant Principal | (516) 992-7655 |
| Mr. Vito Mannino | Assistant Principal | (516) 992-7675 |
| Ms. Casey Kornahrens | Dean | (516) 992-7660 |
| Ms. Karen Miraval | School Nurse | (516) 992-7680 |
| Ms. Melissa Perez | Guidance Counselor | (516) 992-7670 |
| Ms. Danielle Ruccia | Guidance Counselor | (516) 992-7670 |
| Mr. Andrew Meyer | Guidance Counselor | (516) 992-7670 |
| Ms. Lynn Mudryk | Psychologist | (516) 992-7670 |
| Dr. Melissa Minervini | Psychologist | (516) 992-7670 |
| Mr. Peter Mancuso | Psychologist | (516) 992-7670 |
| Mrs. Patricia Furusa | Social Worker | (516) 992-7670 |

Parents who have questions regarding disciplinary matters should contact our Dean, Ms. Kornahrens. Our Counseling Center support staff consists of Mrs. Furusa, Ms. Perez, Ms. Ruccia, Mr. Meyer, Ms. Mudryk, Ms. Minervini, and Mr. Mancuso.

To e-mail a staff member, all contact information is available at:
<https://www.plainedgeschools.org/plainedge-middle-school/school-information>

Important Information

Emergency Student Information Form

The emergency student information form is kept on file in the Health Office and on PowerSchool. This is necessary to contact parents in the event of an emergency. Parents are asked to update the information if any changes are necessary and mail them to the school nurse. All updated information should be on file in the Health Office within one week of the opening of school in September. The school nurse may be reached at 516-992-7680. If there has been a change in your home phone or business phone number, please contact the Guidance Office so that all records may be updated in a timely manner.

Guidance

Guidance services are available for every student in the school. These services include assistance with educational planning, interpretation of test scores, occupational information, career information, study aids, help with home, school and/or social concerns, or any question the student may feel he/she would like to discuss with the counselor. Students wishing to visit a counselor should contact the secretary in the guidance office to arrange an appointment. This can be done by getting a pass in the Guidance Office before or after school. Parents may make appointments with counselors by calling 516-992-7670.

Report Cards

There are four marking periods per year. Please see the district calendar for marking period end dates. Grades are updated regularly and are accessible through the PowerSchool Parent Portal throughout the year.

Attendance

Good attendance is an important prerequisite for academic growth and promotion. If a student is going to be absent or late for school, parents must call the Attendance Office at 516-992-7682 before 7:00 a.m. or 516-992-7670 between the hours of 7:00 a.m. and 3:00 p.m. Any student absent from school cannot participate in any extra-curricular and/or school sponsored activity taking place that day.

Home Tutoring

Students who expect to be absent for a prolonged period of time for medical reasons may be eligible for home tutoring. This service is coordinated by the school nurse and the Guidance Office. Parents should request this service as soon as it becomes evident that a student is likely to be absent for an extended period.

Lateness to School or Class

All students are to be in their first class by 8:00 a.m. Students who arrive after 8:00 a.m. must enter the building through the visitor's entrance. Attendance and lateness can negatively impact a student's eligibility to participate in after school activities.

Early Dismissal

Special dismissal is granted in emergency situations or for appointments (medical, dental, etc.) that cannot be made other than during school time. Parents and guardians should report to the Visitor's Entrance/Security Vestibule and present valid photo ID when picking up a student.

Homework Center

Students are welcome to the library to work on homework every day after school from 2:30 p.m. – 3:15 p.m. Please encourage your child to take advantage of this opportunity if they are behind in their work or need a quiet place to complete assignments.

Personal Property

Cell phones and other electronic devices, except school issued iPads and Chromebooks, are not permitted during the school day. The school district is not responsible for loss, replacement, or damage of personal property.

Bus Procedures

The code of conduct applies to students when they are on the school bus and in the school building. In addition, students must follow the directions of the bus driver at all times. Students who are disruptive on the bus are subject to disciplinary procedures, including suspension of bus privileges. Students are only permitted to take only the bus that has been assigned by the school district; they cannot switch buses.

Field Trips

The purpose of field trips at Plainedge Middle School is to enrich student learning and curricular objectives. Field trips are valuable learning experiences for all students and provide opportunities to extend classroom activities in all subject areas. In planning a class trip, teachers and students set objectives which include pre-trip and post-trip activities. Since costs are a part of the planning, it should be noted that once funds have been collected and expensed to cover trip costs, they cannot be refunded for any reason if a child is not able to attend on the day of the trip.

REGULAR BELL SCHEDULE

| | Start Time | End Time |
|----------|------------|----------|
| Period 1 | 8:00 | 8:44 |
| Period 2 | 8:47 | 9:27 |
| Period 3 | 9:30 | 10:10 |
| Period 4 | 10:13 | 10:53 |
| Period 5 | 10:56 | 11:36 |
| Period 6 | 11:39 | 12:19 |
| Period 7 | 12:22 | 1:02 |
| Period 8 | 1:05 | 1:45 |
| Period 9 | 1:48 | 2:30 |

ADVISORY BELL SCHEDULE

| | Start Time | End Time |
|----------|------------|----------|
| Advisory | 8:00 | 8:24 |
| Period 1 | 8:27 | 9:05 |
| Period 2 | 9:08 | 9:46 |
| Period 3 | 9:49 | 10:27 |
| Period 4 | 10:30 | 11:08 |
| Period 5 | 11:11 | 11:49 |
| Period 6 | 11:52 | 12:30 |
| Period 7 | 12:33 | 1:10 |
| Period 8 | 1:13 | 1:50 |
| Period 9 | 1:53 | 2:30 |

Academic Standards

At Plainedge Middle School, many opportunities are provided for students' academic success. The teaming and guidance programs combine to assist students in reaching their academic potential. In addition, teachers offer extra help sessions before, during, and after school. Students are encouraged to take advantage of these opportunities.

For students who are experiencing academic difficulties, interventions include, but are not limited to, tutoring at the Success program, tutoring at the public library, and conferences with teachers, counselors, and administration.

Student achievement is recognized through the Student of the Month, Honor Roll, and other academic awards.

Honor Roll

Students who maintain an overall average of 90 or higher with no single grade lower than an 80 will be placed on the High Honor Roll for that marking period. Students who maintain an overall average between 85 and 89.9 with no single grade lower than an 80 will be placed on the Honor Roll for that marking period. Please note that the average is not rounded for Honor Roll.

ACADEMIC AWARDS

Each spring, Plainedge Middle School recognizes students at our Academic Awards Ceremony. One of the most prestigious awards that we confer is the Presidential Academic Excellence Award. This award is given to eighth grade students who earned a Superior Academic Award at the end of seventh grade and have maintained an average of 95 or higher in each of the first three marking periods of the eighth grade with no grade below an 80. This award is signed by the President of the United States.

Additionally, Plainedge Middle School recognizes students in all grades sixth, seventh and eighth who have maintained an average of 95 or higher in each of the first three marking periods of their current school year with no grade below an 80 by awarding them with the Superior Academic Award.

Please note that averages are not rounded when determining the recipients for these awards. Plainedge Middle School also bestows an Academic Achievement Award upon one student from each of the building-wide teams in the areas of Math, Science, English Language Arts, Social Studies, and Foreign Language. These awards are decided by teacher committees and are reflective of the following criteria: academic achievement, student growth, dedication to the subject area, sharing of knowledge and skills with peers, and an overall commitment to learning.

NYS Middle School Course and Assessment Requirements

All middle school students in New York State are required to receive instruction in the subject areas listed below. Plainedge Middle School meets or exceeds the minimum State Learning Standards in all units of study.

| | |
|------------------------------|---------------------------|
| English Language Arts | 3 Units of Study |
| Mathematics | 3 Units of Study |
| Science | 3 Units of Study |
| Social Studies | 3 Units of Study |
| Health | ½ Unit of Study |
| Family and Consumer Sciences | ¾ Unit of Study |
| World Language | 1 Unit of Study |
| Music | ½ Unit of Study |
| Physical Education | ½ Unit of Study each year |
| Technology | 1 Unit of Study |
| Art | ½ Unit of Study |

Students who have been determined to need academic intervention services may have the units of study reduced, but not eliminated.

New York State (NYS) Assessments

Grade 8

English Language Arts New York State Assessment
Algebra 1 Common Core Regents or Mathematics 8 NYS Assessment
Earth Science Regents or Science 8 NYS Assessment

Grade 7

English Language Arts NYS Assessment
Mathematics NYS Assessment

Grade 6

English Language Arts NYS Assessment
Mathematics NYS Assessment

New York State High School Graduation Requirements

In order to earn a diploma, every student must earn a minimum of 22 credits in addition to meeting specific testing competencies. Only those students who successfully complete the diploma requirements will take part in the graduation exercises.

| REQUIRED CORE COURSES | LOCAL DIPLOMA (For students with IEPs only) ¹ | REGENTS DIPLOMA | REGENTS DIPLOMA WITH ADVANCED DESIGNATION |
|---|---|---|---|
| English | 4 credits with 1 Regents exam (55 or higher grade) | 4 credits with 1 Regents exam (65 or higher grade) | 4 credits with 1 Regents exam (65 or higher grade) |
| Social Studies | 4 credits with 2 Regents exams (55 or higher grade) | 4 credits with 2 Regents exams (65 or higher grade) | 4 credits with 2 Regents exams (65 or higher grade) |
| Mathematics <i>These credits are in addition to those earned at the Middle School</i> | 3 credits with 1 Regents exam (55 or higher grade) | 3 credits with 1 Regents exam (65 or higher grade) | 3 credits with 3 Regents exams (Algebra I, Geometry and Algebra II) (65 or higher grade) |
| Science <i>These credits are in addition to those earned at the Middle School</i> | 3 credits ² with 1 Regents exam (55 or higher grade) | 3 credits ² with 1 Regents exam (65 or higher grade) | 3 credits ² with 2 Regents exams (65 or higher grade) |
| LOTE ³ (Language other than English) | 1 credit | 1 credit | 3 credits ⁴ |
| Physical Education ⁵ | 2 credits | 2 credits | 2 credits |
| Art and/or Music | 1 credit | 1 credit | 1 credit |
| Health | ½ credit | ½ credit | ½ credit |
| Electives | 3 ½ credits | 3 ½ credits | 1 ½ credits |
| TOTAL | 22 credits | 22 credits | 22 credits |

- All students must score a 65 or above on 5 required Regents exams. However, the low-pass option of scoring 55-64 on the required Regents exams to earn a Local Diploma will continue to be available for students with disabilities. (The Local Diploma option is not available unless a student is classified with a disability.)
- Included in the 3 Science credits earned, one must be a Living Environment course.
- Students are required to complete 1 credit of LOTE in high school or pass in Grade 8.
- Students must pass the locally developed Checkpoint B LOTE examination with a score of 65 or better.
Or students may substitute 5 credits of art, music or career and technical education. However, students who use this substitution option must still earn at least one LOTE credit.
- All students must take physical education each semester and earn the equivalent of 2 credits in order to graduate. Every year a student attends high school he/she must be enrolled in a physical education course.

Courses ending with a Regents Credit at the middle school allow students more opportunities to attain college credits and pursue further study in areas of interest while they are at the high school.

Course Catalogue

All Plainedge Middle School courses are aligned with the New York State Next Generation Standards curriculum.

Grade 6 (9 period day)

| | | |
|---|-----------------------------|-----------------------------|
| 1 | Math | |
| 2 | ELA Lab | Math Extension |
| 3 | English Language Arts (ELA) | |
| 4 | Social Studies | |
| 5 | Science | |
| 6 | Lunch | |
| 7 | Art | Family and Consumer Science |
| | Health | |
| 8 | Music | Physical Education |
| 9 | Language | Technology/Makerspace |

Grade 7 (9 period day)

| | | |
|---|--------------------------------|-----------------------|
| 1 | Math | |
| 2 | English Language Arts | |
| 3 | Social Studies | |
| 4 | Science | |
| 5 | Math Extension/Literacy Skills | Enrichment Wheel |
| 6 | Lunch | |
| 7 | World Language | |
| 8 | Art | Technology/Makerspace |
| 9 | Music | Physical Education |

Grade 8 (9 period day)

| | | |
|---|--|--------------------|
| 1 | Algebra | |
| 2 | Earth Science Lab | Health |
| 3 | Earth Science | |
| 4 | Social Studies | |
| 5 | English Language Arts | |
| 6 | Lunch | |
| 7 | World Language | |
| 8 | Music or Studio Art | Physical Education |
| 9 | STREAM* or AIS** or Literacy Skills or Algebra Extension | |

*Science, Technology, Research, Engineering, Art, and Mathematics

**Academic Intervention Services



Grades 6

Plainedge Middle School is partnered with Columbia University Teachers College Reading and Writing Project as a research-based approach to literacy instruction. Students will read, analyze, and respond to genres of literature including: Realistic Fiction, Informational Nonfiction, and Fantasy. Students will compose various pieces of writing including: Personal Narrative, Informational, Argument, and Literary Analysis. Students will practice literacy skills through daily reading, writing, and discussion both in school and at home. A main goal in ELA classes will be for students to build lifelong independent reading and writing skills and habits.

Grade 7

With a continued emphasis on the Teachers College Reading and Writing Project, students will read, analyze, and respond genres of literature including: Realistic Fiction, Narrative Nonfiction, Dystopian, and Poetry. Students will compose various pieces of writing including: Realistic Fiction, Argument, Literary Analysis, and Poetry. Students will practice literacy skills through daily reading, writing, and discussion both in school and at home. Students will continue to build lifelong independent reading and writing skills and habits.

Grade 8

With a continued emphasis on the Teachers College Reading and Writing Project, students will read, analyze, and respond genres of literature including: Memoir, Realistic Fiction, Historical Fiction, and Short Stories. Students will compose various pieces of writing including: Memoir, Argument, and Literary Analysis. Students will practice literacy skills through daily reading, writing, and discussion both in school and at home. Students will continue to build lifelong independent reading and writing skills and habits.

Literacy Skills 7 and 8

Literacy Skills is a class designed to support students in reading, writing, listening, and speaking. Students are provided opportunities to practice literacy skills as well extend their thinking and knowledge from their ELA classes.



Grade 6

The sixth grade social studies course focuses on the geography and history of the Eastern Hemisphere. This includes the development and interactions between cultures and societies and the comparison of trends in government and economics. In addition, an examination of the Eastern Hemisphere today using geographic skills will provide the foundation for making connections between the past and the present. Some key areas of study include the River Valley Civilizations of the Nile and Indus Rivers, the classical worlds of Greece and Rome, and medieval Europe.

Grade 7

The seventh grade social studies course is the first part of a two-year sequence beginning with the settlement of North America by Native Americans and ending with the Civil War. Strong emphasis is placed on writing skills and the analysis of documents. Chronological reasoning and causation, geography, politics, economy, and culture are infused into this study of history. Important social studies skills are introduced including graph interpretation, essay writing, notetaking, map analysis, and the understanding of political cartoons.

Grade 8

The eighth grade social studies course concludes the two-year sequence ending with an examination of the United States in the 21st Century. There will be a continued emphasis placed on writing, chronological reasoning and causation, and the analysis of documents in preparation for high school. Geography, politics, economy, and culture continue to be infused in to this chronological study of history.

World Language



Grade 6 Spanish or Italian

The course is an introductory level course designed to introduce students to the language and culture while fostering a genuine awareness and understanding. The primary emphasis is placed upon vocabulary and speaking along with aspects of grammar. Various topics are taught through listening, reading, and writing using a communicative approach. By June, students will be able to listen, speak, read, and write in the target language at a beginner's level.

Grade 7 Spanish or Italian

The course is a continuation of language study designed to further students' knowledge of the language and culture. The primary focus of this course is grammar and vocabulary building with an increased awareness, acceptance, and understanding of the language and culture. Students will be practicing speaking, listening, reading, and writing skills. By June, students will be able to listen, speak, read, and write in the language about various topics at an advanced beginner level.

Grade 8 Spanish I or Italian I

The course will further students' knowledge of the language and culture. Students will learn vocabulary and grammar that build upon what they have learned in sixth and seventh grade and develop real-life skills. There will be an emphasis on speaking, listening, reading, and writing during the year. Students will receive high school credit upon successful completion of both the final exam and the course. The course grade will appear on the student's high school transcript.

Mathematics



The Plainedge School District has created a math curriculum that extends from grades 5-8 encompassing all the New York State Math Standards and skills for all our students to successfully complete the Algebra I course. Our curriculum is also designed to spiral concepts and skills as students continue on their mathematical journey. This will allow students more opportunities to attain college credits and pursue further study in areas of interest while they are at the high school.

Grade 6

In sixth grade mathematics, students will experience reinforcement in working basic operations with whole numbers and decimals and expanding knowledge of fractions. Students will also learn to apply these skills in problem solving and consumer mathematics. Applications of basic operations to ratios and proportions will be presented in this course. Students will study algebraic expressions and solve algebraic equations. The study of geometric shapes and mathematic patterns will be examined. Students will be exposed to integers and their use and properties.

Grade 7 – Pre-Algebra

Students in this course are exposed to pre-algebra and geometry curriculum which will continue to build foundational math skills and prepare them for the Algebra I course and Regents Exam in eighth grade. This mathematics curriculum integrates and addresses the following key topics: decimal operations, number theory, fraction operations, integers and rational numbers, beginning algebra, powers and exponents, monomial operations, plane and solid geometry, ratio and proportion, and probability and statistics.

Grade 8 – Algebra I

This course provides a formal development of the algebraic skills and concepts necessary for students to succeed in subsequent mathematics courses. In this class, students will develop the ability to explore and solve real-world application problems, demonstrate the appropriate use of graphing calculators, and communicate mathematical ideas clearly. Topics include: operations with real numbers; linear equations and inequalities; relations and functions; polynomials; algebraic fractions; and nonlinear equations. This course prepares students for the Algebra 1 Regents Exam in June. Both the course and Regents Exam grades will appear on the student's high school transcript. All eighth grade students will take this course unless specific placement by a teacher into Fundamentals of Algebra.

Grade 8 – Fundamentals of Algebra

In this course, students will study the number system and work with expressions, equations, and inequalities. Students will be introduced to functions and understanding their domain and range. They will also continue to learn about geometric concepts such as angle relationships, transformations, Pythagorean Theorem, and the distance between two points. Students will demonstrate the appropriate use of graphing calculators. Placement in this course is only by teacher recommendation.

Math 6 Extension

The purpose of the class is to support and enrich the skills and standards taught in Math 6. Foundational skills are reinforced in this class in order to deepen student understanding of the math curriculum. All sixth grade students are enrolled in this course which takes place two days out of the four-day-cycle.

Math 7 Extension

This class supports the skills and standards taught in Math 7. Foundational skills are reinforced in this class in order to deepen student understanding of the math curriculum. Students are placed in this class on an as-needed basis. Once the support is identified as no longer needed, we allow for fluidity between this support class and the seventh grade enrichment wheel (see course descriptions on page 23).

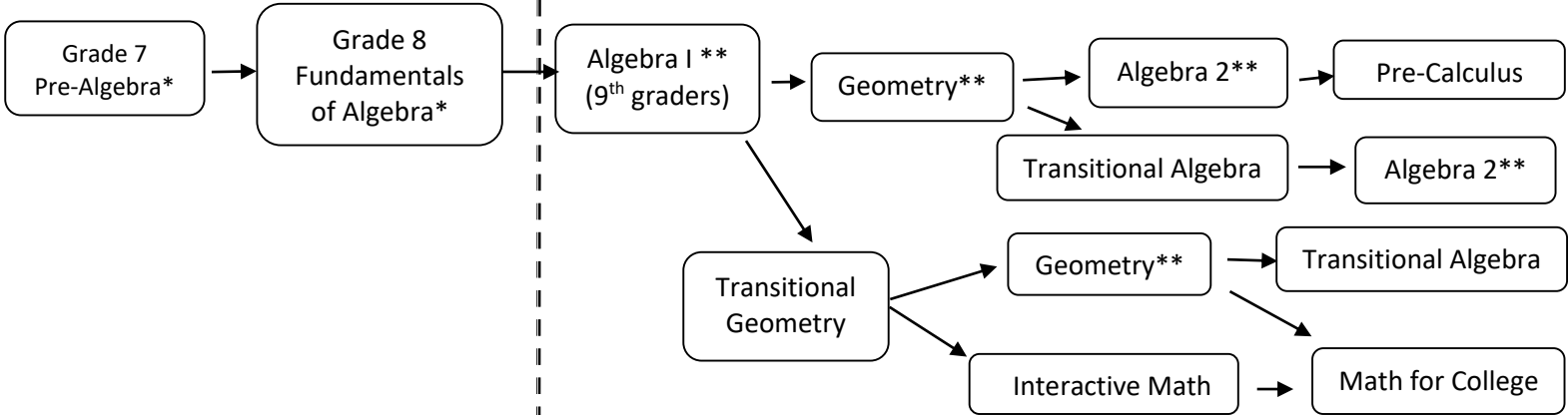
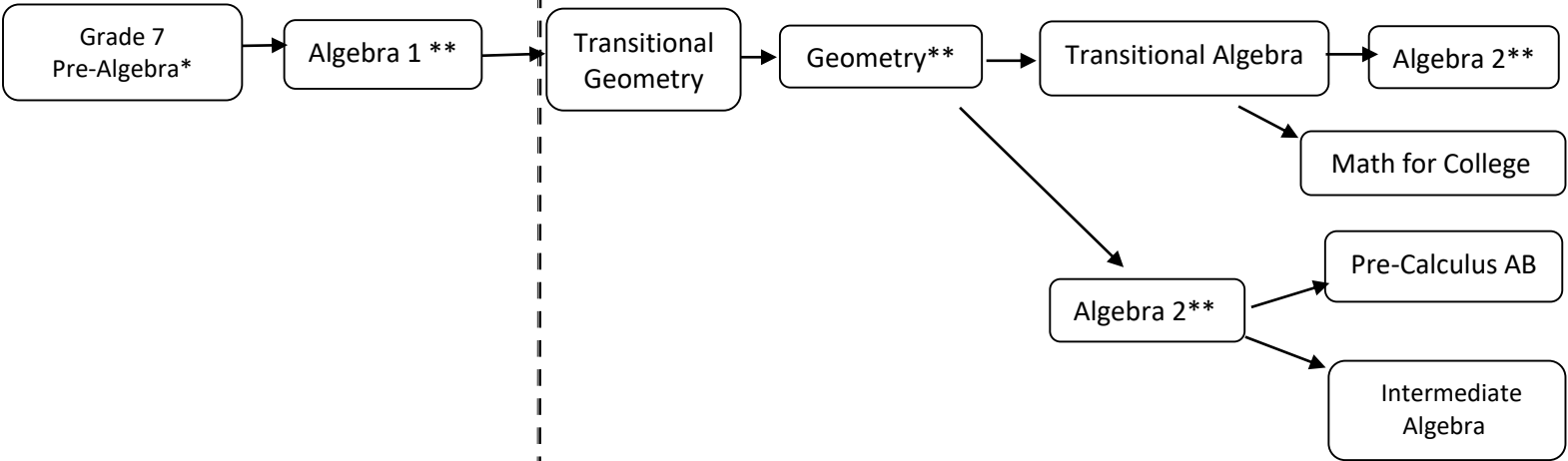
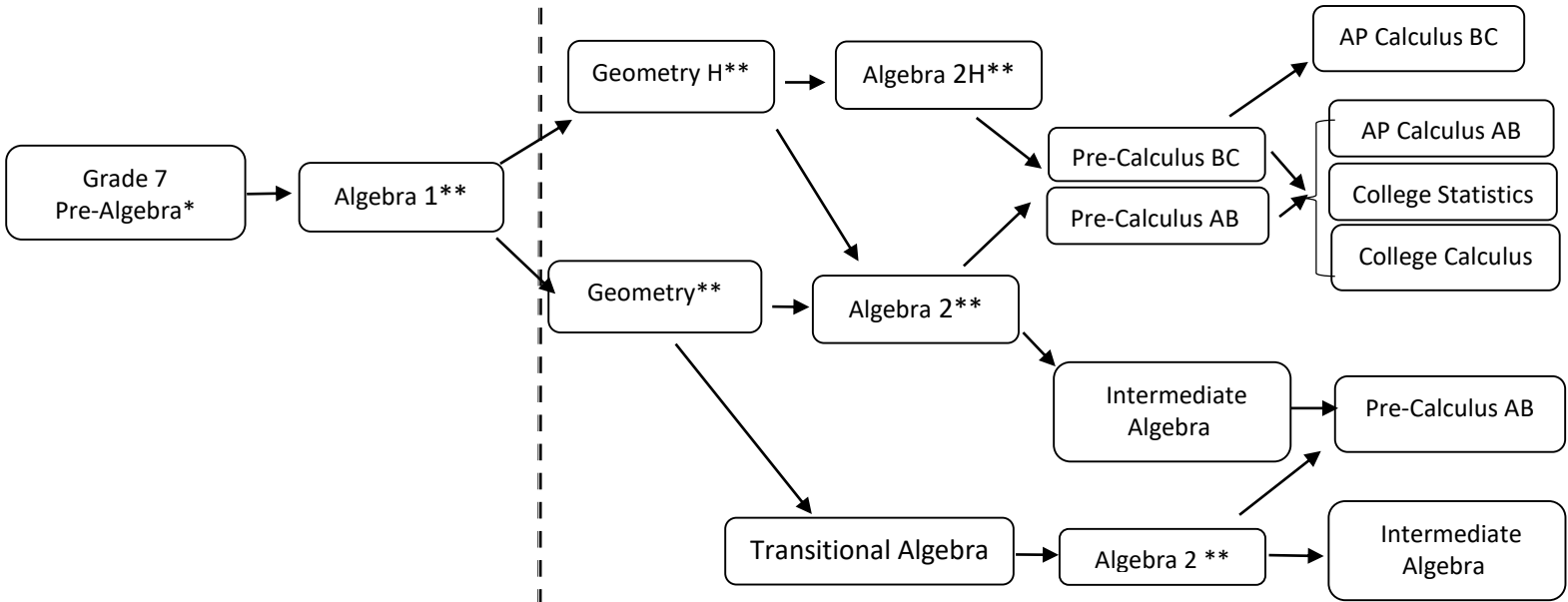
Algebra 1 Extension

This class supports the skills and standards taught in Algebra I. Students are placed in this class on an as-needed basis. Once the support is identified as no longer needed, we allow for the possibility to move to a STREAM elective (see course descriptions on page 18).

Math Department Pathways

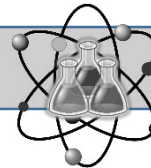
7th and 8th Grade Pathways

9th-12th Grade Pathways



*Course ends in a NYS Math Assessment

**Course ends in a NYS Regents Exam



Grade 6

The course explores our physical world. Topics covered in this course include: conducting investigations using controlled experiments and presenting data using the scientific method, chemistry of matter, differentiating physical and chemical changes, density, and understanding the nature of light and color.

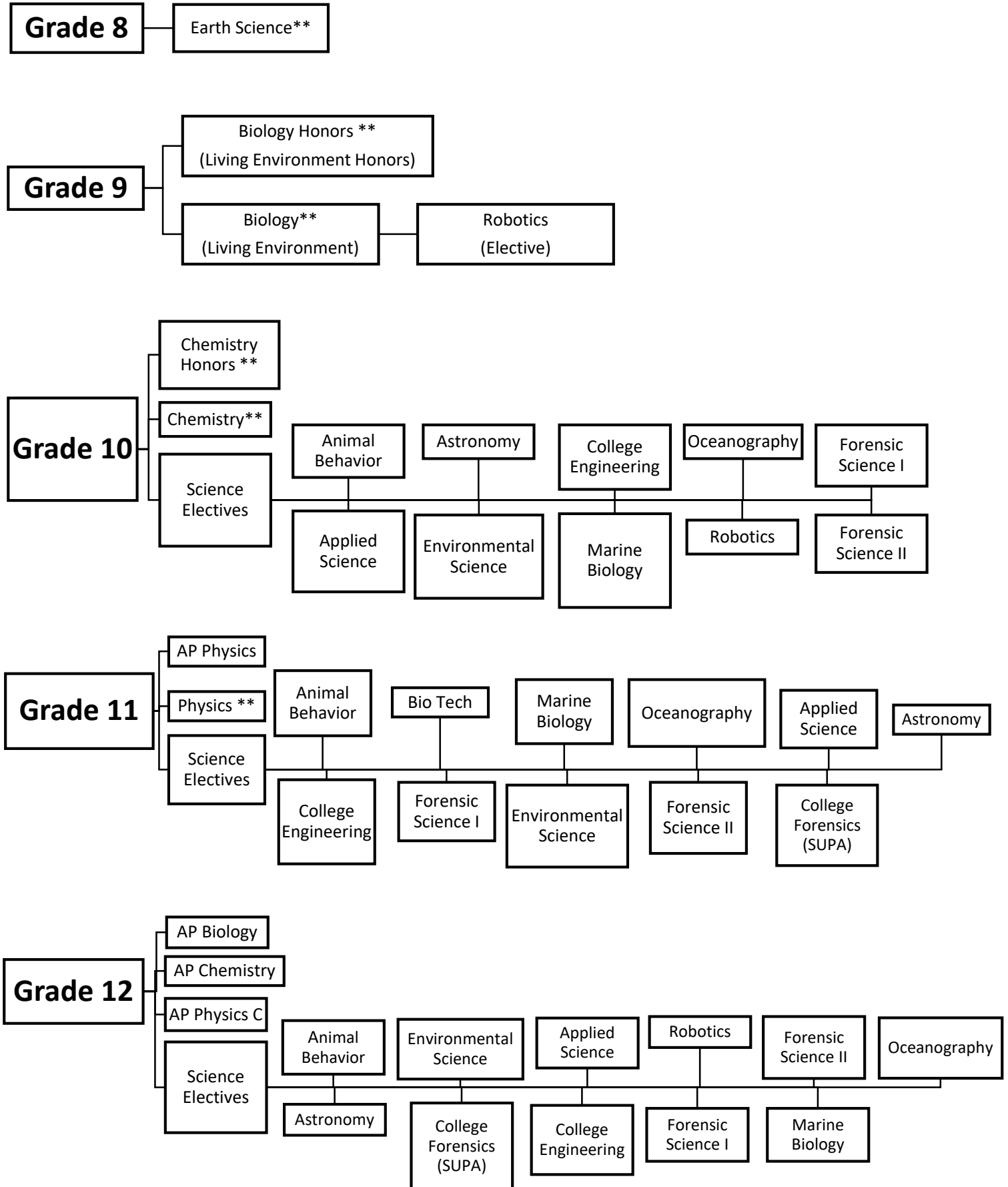
Grade 7

The course explores the unity and diversity of life through a variety of organisms and their adaptations for survival. The ecosystems of birds, plants, arthropods, amphibians, and reptiles are investigated throughout the year. The course culminates with the study of genetics and the evolution of various species.

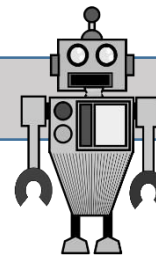
Grade 8 Earth Science

The course takes a hands-on approach to discover new and exciting topics in weather, climate, minerals, rocks, weathering, erosion, astronomy, and the formation of our landscapes. Students will gain a new perspective of our planet exploring the energy we consume and its effects on the future of Earth. The students will participate in 30 hours of lab activities ranging from topographic mapping to analyzing earthquakes and volcanoes. The students will take a laboratory practical and Regents Exam in June. Both the course and Regents Exam grades will appear on the student's high school transcript.

Science Department Pathways



STREAM Curriculum



STREAM is an acronym for Science, Technology, Research, Engineering, Art, and Mathematics. These courses provide students with real world and hands-on experiences that promote the four C's of 21st Century Learning: Communication, Collaboration, Critical Thinking, and Creativity.

STREAM - Environmental Studies

Students will study water issues affecting Long Island as well as the entire country, including groundwater pollution, runoff pollution, and oil spills. Students will participate in hands-on activities where they will model groundwater, perform actual water quality tests, and conduct a scenario where they research, create, and analyze a mock oil spill cleanup. Students will be responsible for independently working on problem solving activities and creating presentations that demonstrate and apply their research and knowledge.

STREAM - Forensics Science

The course focuses on how forensic science techniques are used in solving crimes. Students will conduct various forensic tests and analyze evidence, including fingerprints, blood type, blood spatter, DNA evidence, hair and fiber trace evidence, impression evidence, and forensic anthropology. Students will learn about each type of evidence and use problem solving skills to analyze and solve mini-crime challenges. Students will study the use of forensics in past crimes.

STREAM - Investments

Students will be given a hypothetical \$100,000.00 to invest in the Stock Market and strive to create the best-performing portfolios using a live trading simulation. They will work together in teams utilizing leadership, organization, and negotiation skills as they build their portfolio. They will understand mathematical concepts, such as decimals, probability, and estimation. Students will participate in discussions by providing in-depth analysis of real world stocks, particular industries, and the stock market.

STREAM- Entrepreneurship

Students will understand the fundamentals and operations to build an entrepreneurial career. They will compete in teams to construct a comprehensive business plan to start, develop, finance, market, manage, and launch a new product. Some of the topics covered are: assessing personal characteristics, developing a marketing strategy, evaluating sources of financing, webpage design, and product costing. Critical thinking and mathematical skills will be emphasized in the analysis of financial reports, such as budgets, balance sheets, and profit and loss statements. The culminating activity will be the actual production and presentation of a prototype of their product in an effort to obtain the necessary financing to launch their business.

STREAM – Robotics *

Robotics is a lab-based course that uses a hands-on approach to introduce the basic concepts of robotics focusing on the construction and programming of autonomous, mobile robots. Students will learn different robotic systems such as Lego Robotics, REV, and TETRIX.

STREAM - Mock Trials *

Have you ever wondered what it would be like to work in a courtroom? Would you want to be the judge, a juror, or a lawyer? In Mock Trials, you will learn the inner workings of a trial. Students will develop an understanding of the people in the courtroom and their functions, the importance of rules in ensuring fairness of the proceeding, and the importance of witnesses and jurors in determining the facts of the case. As students learn the roles and rules of the court, they will have the opportunity to role-play in a series of trials that will be held at school.

STREAM – Farm-to-Table *

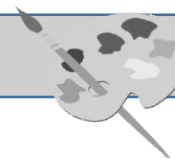
Using a hands-on approach, this class teaches students how food is grown, prepared, and cooked to create fresh meals. Students will use seeds to grow seasonal fruits and vegetables in a full-sized greenhouse to create dishes in the cooking lab. There is a focus on the importance of sustainability and the positive benefits of growing your own food. Students will work together to create a school garden that will be shared by the Plainedge community.

STREAM - Math, Sports, & Money *

Students will incorporate a wide-range of math skills and real life principles to determine the correlation of how statistics and data play a large role in many sports today. Students will also learn the nuances of sports contracts, how to budget their own future finances, the importance of interest rates, and the avoidance of debt. Students will study the concepts of financial literacy in order to have a sense of financial well-being and be fiscally responsible young adults.

*New Course for the 2022-2023 school year

Art



Grade 6

Students will be introduced to Teaching for Artistic Behavior (TAB). TAB is a new, choice-based approach to teaching art. Instead of all students doing the exact same thing every day, under TAB students are given the freedom to choose the materials and the projects they want to work on. This approach fosters creativity and promotes self-reliance and independent thinking.

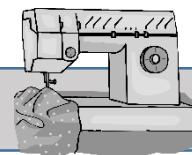
Grade 7

The course will focus on teaching students to develop Studio Habits of Mind (SHoM) and encourage them to think like artists. Students will learn to develop their craft, engage and persist, envision, express, observe, reflect, stretch, and explore various artistic models. This course focuses on basic concepts in art history and art appreciation around the world.

Studio in Art

The course is designed to teach students more in-depth skills and knowledge in drawing, painting, sculpture, and art history. Formal instruction is balanced with time for self-exploration to help students develop self-discipline and confidence as an artist. The goal is to provide a solid foundation for students to advance to more challenging high school art courses. This is the first part of the two-part Studio in Art curriculum; students will complete the second half of this course in high school. Upon completion of both parts, the two course grades will appear on the student's high school transcripts and fulfil their art credit towards their high school diploma.

Family & Consumer Science



The course is the practical application of decision making, foods and nutrition, food safety and sanitation, resource and time management, consumerism, personal development, child care, clothing selection and maintenance, career exploration, career planning, and the integration of other subject areas. Students develop and use their abilities to contribute to society through the pursuit of career, family, personal, professional, and academic futures.

Health



The Health Education program is designed to promote a healthy lifestyle through acquiring knowledge and skills that provide a lifelong commitment to optimal health. The health curriculum enhances self-esteem and enables students to make better choices. Health is offered in grades 6 and 8.

Physical Education



Plainedge Middle School's Physical Education program promotes physical fitness and the development of life skills such as cooperation, decision making, and critical thinking through varied physical experiences. Students enjoy traditional team sports, cooperative games, and non-traditional games. Students must lock all their belongings in their locker before proceeding to PE class. Nothing should be left on the benches.

Technology



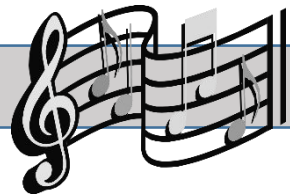
The class incorporates the integration of mathematics, science, engineering, and technology. Major focuses in this course include: robotics, engineering design, problem solving, critical thinking, and application of student's knowledge to real world situations. The students gain an understanding of various technological processes and how technology benefits humanity.

Makerspace



Makerspace is a course devoted to engineering concepts. Students will undergo a series of STREAM challenges, projects, and group collaboration activities. Students will understand the importance of the design process and how it plays an essential role in creating innovative solutions in our world. Topics include: Computer Aided Design, 3D Printing, Coding, Rocketry, Aerodynamics, Hydrodynamics, Graphic Design, Video Production, and more. Students will develop a conceptual understanding of these topics through hands-on experiences. Problem solving skills will be put to the test with projects like the Egg-Crash Car and Sail Boat Regatta. Each activity provides students with an engineering challenge, design thinking, collaboration, real-world problems and solutions.

Music



Band

Grades 6, 7 and 8

During the school day, students are instructed in one large ensemble and in a small weekly lesson group. The ensemble meets every other day. In sixth grade, technique and different musical styles are explored through concert preparation. In seventh grade, students work to explore more complex techniques in their weekly lessons. In eighth grade, students continue to improve upon technique, range, and musical expression. Knowledge and application of music theory and aural skills are incorporated into each rehearsal and lesson. Attendance at the winter, band festival, and spring concerts is mandatory.

Chorus

Grades 6, 7 and 8

Students are instructed in basic vocal techniques as well as basic melodic and rhythmic notation. In seventh and eighth grade, students are exposed to more complex melodic and rhythmic concepts as well as new genres of music. Throughout their musical careers at the middle school, they will demonstrate their vocal proficiency through evaluations. Attendance at the winter and spring concerts is mandatory.

Orchestra

Grade 6, 7 and 8

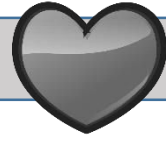
Students are exposed to music theory during their orchestra rehearsals and weekly group lessons. They learn to perform music in different styles from Baroque to popular music. Students will perform more difficult compositions each year. This will help support their music theory skills. Attendance at winter concerts, string festival, and spring concerts is mandatory.

General Music

Grades 6 and 7

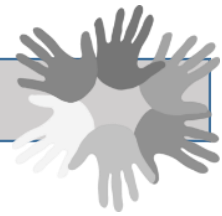
General Music provides exposure to a variety of topics in music theory, musical notation, elements of music, and an overview of various time periods in music history from Medieval through Baroque (in grade 6) and Classical to the present day (in grade 7).

Advisory



The Advisory program is an incredible opportunity for staff and students to interact on a deeper level that is not always possible in the regular classroom setting. Advisory offers small group settings where students can strengthen their relationships with their peers as well as form a stronger bond with an adult in the building. This helps to increase the comfort and confidence level of each student through meaningful conversations and shared experiences. Each lesson is geared toward specific academic and social-emotional learning themes that include: Time Management; Conflict Resolution; College and Career Readiness; Empathy; and Mindfulness. Due to the unique small group setting, each advisor gets to know their students on a more personal level as they address topics that are crucial to each student's character development.

Seventh Grade Enrichment Wheel



Global Conservation *

The class will teach students the meaning of conservation and its impact on our world. Student learning will be enhanced through inquiry and project based learning. Throughout the class, we will explore the current movement to conserve, go green, and protect our natural resources as well as the organisms that inhabit the Earth. Exploration will include a variety of activities to help further understanding of the necessity in protecting the Earth to make it a better place to live.

The Big Pitch! *

The course will educate students about marketing and advertising techniques. Through hands-on activities and mini-projects, students will create their own advertisements, slogans, and persuasive commercials. The culmination of all mini-activities will be a Shark Tank Pitch competition for an existing product that made an impact on history or for a product that they invent and design on their own. All students will understand the influence of print, video, digital, and social media advertising.

Script to Screen *

Everyone loves a great movie! Movies need new scripts as well as people who can write them. In this course, students will learn the process of how an idea becomes a script and a script becomes a movie or television show. Students will create their own scripts, examining characters, scenes, and dialogue, and they will work together to produce a version of a script into their own short film.

Project Math *

In this hands-on course, students will complete projects using authentic data to gain a deeper understanding of how data informs decisions. Topics will include tax, discount, gratuity, unit price, ratios, proportions, scales, polygons, and graphical data. In addition, students will research a mathematical topic of interest and create a presentation to educate others.

Special Class Offerings



Science 8 - This course engages students in real-world problem solving that sparks critical thinking about our living world. It provides an introduction to fundamental principles of human anatomy and physiology, genetics, and evolution as well as an understanding of the functions of living systems. Students will be placed in this course according to their Individualized Education Program (IEP).

Family and Consumer Science 2 - In this class, students will learn the necessary life skills for preteens and teens in order to accomplish various tasks when a new situation arises. This class will be using a hands-on approach with crafts, projects, and expert guest speakers. Topics will be driven by interest and will include: Vision Boards; Goal Setting; Verbal Communication Skills; Written Communication; Food Safety; Cooking; Careers and Hobbies; and much more. Students will be placed in this course according to their IEP.

High School Prep - In this course, students will learn skills that will help them to be successful in high school and beyond. There will be hands-on experiences as well as guest speakers. Topics will include: Creating a Vision Board; Setting Goals and Keeping Them; Study Skills; Strategies For Success; Communication and Social Skills; Problem Solving; Decision Making; Coping with Emotions Skills; Peer Conflict Resolution; and many more.

Special Class 9:1:3 - In this program, students will develop functional living, academic, and social skills. They will increase their receptive and expressive verbal language through the use of structured instruction and peer communication. Students will practice prevocational and vocational skills daily within the classroom and out in the community. They will venture into the community weekly on field trips applying the information and skills they have learned in the classroom into the real world environment. This program is individualized and provides each student instruction geared to his or her specific needs. Students will learn academics that relate to their everyday lives. Students will be placed in this course according to their IEP.

Extracurricular Activities



Participation in extra-curricular activities is an excellent opportunity for students to be fully engaged in the Middle School experience. Ineligibility for participation could result from academic behavior or attendance irregularity. In all cases, the final determination is made by the principal.

Art Club - This club is for students who would like to work on art projects independently. Projects will be assigned prior to each club meeting date, and we will use club meeting times to discuss your finished projects. All projects will use household materials that students may already have at home. We will explore a variety of techniques, some more technical than others, and some more playful. You do not have to complete all of the projects or attend every meeting. Please pick and choose the projects you like, and only attend the meetings that interest you. If you miss a meeting, no problem — just skip that one and join us for the next one!

Best Buddies Club -The Best Buddies Club invites students with and without intellectual and developmental disabilities to develop friendships in a community that celebrates their diversity of character and abilities. Meetings are once a month for social activities. Additionally, members are given opportunity to interact socially with their Best Buddy on an individual basis twice a month.

Chamber Group - String students who want to broaden their musical experiences can join this ensemble. Chamber orchestra performs at various school functions throughout the year.

Chess Club - This club is for any level of chess player. It is a relaxed atmosphere so that members at any level can learn to play chess or compete against experienced players. There is a tournament held each year in which the top prize is a new chessboard. All students are welcome.

Citizenship Club - The mission of this club is to encourage and promote an atmosphere of respect and tolerance throughout the Middle School. The club actively promotes the school's anti-bullying message throughout the year. The Citizenship Club celebrates and rewards students for academic achievement as well as for demonstrating upstanding character each month at the Student of the Month Breakfast.

Drama Club – The Drama Club exposes students to all aspects of stagecraft which culminates in a live musical production mid-year. Students participate in performance, set building, scenic design, costuming, make-up, and publicity. Auditions to perform in the musical are held in early October.

Family and Consumer Sciences (FACS) Club – Do you like to cook? How about making things with your hands? The FACS club focuses on being creative in the kitchen as students explore easy to make foods that can be made at home. In the past, some of the activities included making pillow cases to donate to children’s hospitals, sponsoring *Thank you for Being a Friend Day*, and catering school dances. A variety of other activities occur throughout the year.

Jazz Ensemble – The jazz ensemble is open to all students by audition. The group performs at various functions throughout the year and plays a variety of musical styles including swing, funk, rock, and blues.

International Club - The International Club expresses the diversity of our school by sharing our unique traits with each other. Students will learn about different places all over the world to increase cultural awareness. Students will explore cultures, languages, and traditions around the world through student-directed activities. Students will also prepare for International Week and International Night.

Investment Club – Who Wants to be a Millionaire? If so, join the Investment Club and learn about the exciting world of Wall Street. Club members can work in small groups, with friends or alone, and will be given a hypothetical \$100,000.00 to invest in the stock market. Members strive to buy the best-performing stocks using live trading simulations. Rewards will be given to the top three teams on a monthly basis.

Leaders Club – Leaders Club donates time and money to our school and community through fundraising events throughout the school year. As a club, members lead, collaborate, and communicate with one another to sponsor and plan for the Sports Night event, where students of all grades participate in various sports activities. Through school-wide experiences and club meetings, members express and continue to learn what it means to be a leader.

Library Club - Members will become liaisons when classes do research projects, use Library Media Center (LMC) technology, or need assistance. Students are trained to become LMC technology champions of such things as the projectors, laptops, databases, SmartBoards, and search engines.

Mathletes – Members will be among nearly 150,000 students worldwide participating in a series of math contests throughout the year. Members get a chance to solve unusual and challenging problems. This club provides an opportunity to think creatively and use mathematical skills learned in the classroom. Any and all students in 7th and 8th grade are welcome to join.

Math Olympiads - Members participate in a series of monthly mathematical contests, from November to March. The goal is to stimulate enthusiasm and a love for mathematics, introduce important mathematical concepts, develop mathematical flexibility in solving problems, strengthen mathematical intuition, and provide for the satisfaction, joy, and thrill of meeting challenges. All 6th grade students are welcome to join.

National Junior Honor Society (NJHS) - Membership into this group is an honor and privilege extended to those students who have demonstrated superior achievement in the areas of academics, leadership, service, and character. This is a service organization that fundraises and provides services to the school and local community. Application for membership is accepted in the spring of each school year and is open to seventh grade students only.

Newspaper Club – Interested in reporting what is going on at Plainedge Middle School? Or writing news stories about the latest and greatest for our students and teachers? How about taking pictures of events and special days at the middle school? Newspaper Club is published electronically four times per year and includes what's happening around us, what's happening at the middle school and photographs from special events. Get some real world journalism experience and keep the pulse on what students and teachers want to read about.

Robotics Grade 6 –Teams design, build, and program a LEGO® MINDSTORMS® robot to compete on a themed table-top playing field. Along their journey, students develop critical-thinking and team-building skills, build STREAM self-confidence, and gain valuable perspective on the growth mindset where failure is part of the learning process.

Robotics Grades 7 and 8 –FIRST Tech Challenge teams are challenged to design, build, program, and operate robots to compete in a head-to-head challenge in an alliance format. Guided by adult coaches and mentors, students develop STREAM skills and practice engineering principles, while realizing the value of hard work, innovation, and working as a team. The robot kit is reusable from year-to-year and can be coded using a variety of levels of Java-based programming. Teams design and build robots, raise funds, design and market their team brand, and partake in community outreach to earn specific awards. Participants are eligible to apply for \$80M+ in scholarships.

S.A.D.D. - Students Against Destructive Decisions is a club that organizes Red Ribbon Week yearly and helps raise funds to provide drug prevention and educational programs to raise awareness at Plainedge Middle School. We sponsor the Camfel assembly each year as well as Holiday Magic, a program for which we buy several thousand dollars of holiday gifts for families in need.

School Store - The store is open during lunch periods for the sale of supplies and other merchandise. Volunteers are selected to work in the store at the beginning of the school year based on scheduling and teacher recommendation.

Science Club – The Science Club prepares students to participate in the U.S. Department of Energy nationwide sponsored Science Bowl held at the Brookhaven National Laboratory. It is a fast-paced question and answer Jeopardy-like competition on a wide range of science and math disciplines. Disciplines include Biology, Chemistry, Earth Science, Physics, and Math. Only 8th graders can compete in the Science Bowl but interested 7th graders are encouraged to join the club.

STREAM Club - Meeting in the Makerspace, STREAM Club allows students to explore, create, and problem solve. Inspired by science, technology, engineering, art, and math students will utilize Makey Makey, the 3D printer, Turing Tumble, Little Bits, and other technology to compete in mini-competitions and solve real world problems. Join us to create amazing things, participate in our in-house Shark Tank competition, explore the ideas of Rube Goldberg, and much more!

Student Council - The council members acquire leadership skills and build school spirit, loyalty, and cooperation through working with students and faculty in guiding many different activities. Activities include: fundraisers for pediatric cancer awareness, craft drives for children's hospitals, World Cereal Drive, Soles 4 Souls, Autism Awareness, Toys for Tots Dance, and many other events.

Success Club – The Success program provides academic support for students in all areas. Our 8th grade National Junior Honor Society students provide free one-on-one tutoring to any student who needs help or support. They can work with students on homework, organizational skills, study skills, and much more! This program will begin in October and run every week from 2:30-3:15pm. All grades are welcome. No sign up necessary. Just bring whatever you need help with and our NJHS students will assist you.

Tri -M - Music Honor Society is a club that motivates and recognizes students who love music. We have meetings and perform for each other monthly. Students must have an average of 90% or above in their music class to belong to Tri-M. Membership is offered to only 7th & 8th grade students.

Yearbook Club - The Yearbook Club is responsible for the production of the school's yearbook. Students design the yearbook using an online program and are assigned different roles to perform and work alongside the yearbook advisor. Students design pages, gather photos, create collages, devise ideas, review, and edit the final production of the yearbook. In addition, club members will have input and vote on creative things to include in the yearbook.

Sports



Interscholastic sports are open only to seventh and eighth grade students. A physical examination is required for all who participate in sports. An updated emergency contact card must be filled out 30 days prior to the start of each sport season. Further inquiries with regard to middle school sports should be directed to the Director of Athletics, T.J. Burke, at 516-992-7475.

Academic Ineligibility

Ten times over the course of the school year middle school administration will run academic ineligibility reports. Students failing two or more classes at the time these reports are run will be placed on academic probation and no longer be eligible to participate in activities, school events, co-curricular clubs, or athletic events. If found to be ineligible, a waiver may be requested by submitting two letters, one from the student and one from the parent or guardian stating why such a waiver should be considered by administration. Waiver letters will be considered within five school days of the submission date. Letters should be submitted to the student's guidance counselor. Unless a student is granted a waiver, the student will not be considered for eligibility until the next report run. Eligibility reports will be run at the following times:

- One week before Winter I, Winter II and Spring sports seasons begin
- End of marking periods 1, 2 and 3
- Five weeks into marking periods 1, 2, 3 and 4

The middle school administration as well as club advisors and coaches (through the guidance counselors) reserve the right to check any student's grades in PowerSchool at any time during the school year. In doing so, if a student is found to be failing one or more subjects, the middle school administration reserves the right to impose an intervention. Interventions may include but are not limited to: placing a student on a daily progress report; practice, but not play, in games for athletes; academic ineligibility; being placed on probation.

Chromebooks

The Chromebook one-to-one laptop program is designed to provide access to cutting-edge tools appropriate for learners of varied abilities. Providing students with Chromebooks to use at home or in the classroom demonstrates our commitment to educating our students as 21st century learners and ensuring they become college and career ready. The use of the Chromebooks in a learning environment integrates technology meaningfully into the curriculum and provides students with extended opportunities to discover, create, learn, reflect, and communicate.

Chromebooks are only to be used for educational purposes. Students may only download apps if they are instructed to do so by their teacher. Gaming on a school issued Chromebook is not permitted. Students who are found to be gaming, downloading unauthorized apps, and/or messaging on the Chromebooks may be subject to disciplinary action.

All students are expected to ensure that the Chromebook and accompanying equipment is well maintained. Loss or damage to this equipment will result in the following replacement fee schedule: Chromebook - \$100, Charger - \$40

To help keep your child safer and more scholarly online, Plainedge Public Schools currently utilizes online services provided by GoGuardian. It may be helpful to know that over 10,000 other schools use GoGuardian to protect 5.5 million students across the world, and the Global Educator Institute has endorsed the GoGuardian Teacher product.

We have chosen GoGuardian to:

- Help protect students against harmful and inappropriate online material
- Help students stay “scholarly” and more focused when learning online
- Help assess students’ progress towards class assignments
- Facilitating communication between teachers and students during class time

While GoGuardian monitors student computer usage both in and out of school, when a student is off campus, parents are responsible for supervising internet access and usage. We encourage you to discuss rules for appropriate internet usage with your child, and to reinforce lessons of digital citizenship and safety with him or her. We also highly encourage you to report any potential cyberbullying or other sensitive issues to us. If you have any further questions, please contact the Middle School Administration at any time.

Plainedge Public Schools also offers parents the GoGuardian Parent App to monitor and control student use of the internet while home. For more information, please visit our website at <https://www.plainedgeschools.org> and look for “Technology,” under our Parents tab.

Dress Code Guidelines

A student's dress, grooming and appearance, including hairstyle/color, jewelry, make-up and nails, shall:

1. Be safe, appropriate and not disrupt or interfere with the educational process.
2. Recognize that extremely brief garments such as tube tops, net tops, halter tops, spaghetti straps, plunging necklines (front and/or back) and see-through garments are not appropriate.
3. Ensure that under garments are completely covered with outer clothing. This includes bra straps. Shorts should be at least as long as a child's fingertips reach when their arms are stretched at their sides.
4. Not include footwear that is a safety hazard.
5. Not include the wearing of hats in the building except for a medical or religious purpose.
6. Not include items that are vulgar, obscene, and libelous or denigrate others on account of race, color, religion, creed, national origin, gender, sexual orientation or disability.
7. Not promote and/or endorse the use of alcohol, tobacco, vapes or illegal drugs and/or encourage other illegal or violent activities.

The Administration is responsible for enforcing the dress code. Students in violation will be given an opportunity to change clothes or have a parent/guardian bring clothes to school. Noncompliance will result in disciplinary consequences.

Bully Prevention Statement

Everyone at Plainedge Middle School is committed to creating and maintaining a nurturing school environment that builds respect for self and others. We will treat each other with respect, and we will refuse to tolerate bullying in any form. It is our belief that bullying is participation in any behavior that causes physical, emotional, or social damage to others. Bullying is unfair and involves an imbalance of power or strength. It happens when someone continuously says or does something that is hurtful, frightening, threatening, and/or teasing. This can also include leaving someone out on purpose.

ANTI-BULLYING PLEDGE

This is for me...
...my friends today...
And my friends tomorrow.
I think being mean stinks...
I won't watch someone get picked on
Because I am a do something person...
Not a do nothing person.
I care
I can help change things
I can be a leader
In my world there are no bullies allowed.
Bullying is bad...
Bullying bothers me.
I know sticking up for someone is the right thing to do
My name is _____
And I won't stand by...
I will stand up.

If you or anyone you know are having any issues with bullying in Plainedge Middle School, please visit the **BULLY PREVENTION BUTTON** on the home page of the Plainedge Middle School website

Plainedge Middle School Disciplinary Standards

A vital component of a middle school student's education is learning to make good decisions. All members of the middle school community work together to help students understand how to make good decisions, cooperate with each other, and respect all members of the school community. Part of the learning process is understanding that actions have consequences.

At Plainedge Middle School, we employ a code of conduct which all students must follow. Such a code is recommended by the Safe Schools against Violence in Education Program (SAVE Legislation) and adopted by the Plainedge Board of Education. Parents are encouraged to review the complete code of conduct. (Plainedge Board Policy 5300.)

In the beginning of the year and throughout the course of the year, counselors, teachers, and administrators review appropriate behaviors with students. On the following pages, the *Plainedge Middle School Disciplinary Standards* specifies infractions and a range of potential consequences. Application of these standards requires a firm, fair, and consistent approach with students.

All disciplinary consequences are at the school administrator's discretion and all consequences may be modified according to extenuating circumstances or severity. Parents will be notified when an infraction results in a written referral.

Any consequences that include In-School Suspension (ISS) or Out-of-School Suspension (OSS) will result in disciplinary ineligibility. Students on disciplinary ineligibility may not participate in any after school activities. An ineligibility waiver may be requested by following the same procedure as outlined under Academic Ineligibility on the previous pages of this handbook.

VIOLATIONS AGAINST SCHOOL ADMINISTRATIVE PROCEDURES

| DISCIPLINARY OFFENSE | 1st OFFENSE | 2nd OFFENSE | 3rd OFFENSE |
|---|---|---|---|
| Insubordination: continued willful refusal to follow given directions. | 1 + days ISS | 1 + days ISS | 1 + days ISS |
| Disruptive Behavior Minor Major | 1 + days detention 1 day ISS | 2 days detention 2 days ISS | 1 day ISS 1 day OSS |
| Forgery: falsifying signature or data | 1 day ISS | 2 days ISS | 3 days ISS |
| Tardiness: excessive lateness to school or classes | After 5 lateness: 1 LD | Subsequent lateness: 2 LD | 1 day D |
| Failure to attend detention: | Initial penalty doubled | Initial penalty doubled | Initial penalty doubled & ISS |
| Cheating: including but not limited to copying, plagiarizing, using unauthorized help sheets, giving/assisting other students in providing answers | Teacher/Parent/student conference Counseling/student support | Teacher/Parent/student conference Counseling/student support | Teacher/Parent/student conference Counseling/student support |
| Use of: cellular phones and other materials that interfere with the educational climate and/or safety of students | Confiscation & Parental notification | Confiscation Parental notification & LD | Confiscation Parental notification, retrieval for school year, & D |
| *Alcohol/controlled dangerous substance/paraphernalia and/or Tobacco/Vapes: Possession, use, distribution and/or under the influence | 5 days OSS & Student Support Services | 5 + days OSS & Student Support Services | 5 + days OSS & Student Support Services |
| *Assault: causing physical injury to another person | | | |
| Student | 5 days OSS | SH | SH |
| Staff | 5 days OSS | SH | SH |
| *Harassment/Bullying: verbally and or physically abusing another in a threatening or insulting manner. | 1 day ISS | 2 days ISS | 2 + days OSS |
| **Weapons Possession | | | |
| Firearm | Automatic 1 year Suspension / SH | | |
| Others | 5 + days OSS | SH | SH |
| *Fighting: two or more parties contributing to a situation by action | 2 – 5 days ISS/OSS | 2 - 5 days OSS | 5 + days OSS & SH |
| *Inciting Violence: verbally or otherwise encouraging someone else to participate in a violent act | 1 - 2 days ISS | 2 - 3 days ISS | 1 + days OSS |
| Verbal Abuse: disrespectful language to another person | 1 days ISS | 2 days ISS | 1 days OSS |

| | | | |
|--|------------|------------|--------------|
| <p>*Willful Damage of School Property: intentional destruction of school property (student (s) shall be responsible for all damages</p> | 1 days ISS | 2 days ISS | 1 + days OSS |
|--|------------|------------|--------------|

Key:

SH – Superintendent’s Hearing

* - May result in contact with Police

** - Will result in contact with Police

ISS – In school suspension

OSS – Out of School Suspension

D – Detention (PM)

LP – Loss of privilege/Assigned lunch table

For any infractions not covered in the above grid, the rubric below will be used to determine disciplinary action.

| LEVEL 1 | LEVEL 2 | LEVEL 3 | LEVEL 4 |
|--|---|---|--|
| <p>Misbehavior on the part of the student that disrupts the classroom environment or the educational process.</p> <p><i>Possible consequences include verbal warning, written warning, parent notification, lunch detention, after school detention, extracurricular ineligibility, suspension from transportation, or in school suspension (ISS).</i></p> | <p>Continuation of Level 1 misbehavior or misbehavior whose frequency or seriousness disrupts the classroom environment or the educational process.</p> <p><i>Possible consequences include parent notification, lunch detention, after school detention, extracurricular ineligibility, suspension from transportation, in school suspension, or out of school suspension (OSS).</i></p> | <p>Continuation of Level 1 or Level 2 misbehavior or misbehavior whose frequency or seriousness disrupts the classroom environment or the educational process.</p> <p><i>Possible consequences include suspension from transportation, in school suspension, or out of school suspension.</i></p> | <p>Continuation of Level 1, 2, or 3 misbehavior or acts that may be directed against a person or property and have the potential of seriously endangering the health or safety of others in the school.</p> <p><i>Possible consequences include suspension from transportation, in school suspension, out of school suspension, or SH.</i></p> |
| <p>Examples Disruptive behavior Running in hallways Unexcused tardiness 3X Violation of dress code Use of electronic devices Chewing gum Inappropriate displays of affection Insubordination (failure to follow directions of staff) Verbal altercation Play fighting</p> | <p>Examples Fighting Racial, religious, or ethnic slurs Disrespectful behavior Inappropriate behavior Inappropriate language Taunting (i.e., encouraging a fight) Throwing an object Misuse of school property Cheating and plagiarism Forgery Graffiti Harassment or bullying</p> | <p>Examples Cutting class Cutting school Inciting violence False identification Destruction or defacing property Theft Sexual harassment</p> | <p>Examples Violent threats to any person/institution Possession, of weapons Physical assault of any person Possession or use of illegal substances Destruction or defacing property Setting off fire alarm and/or fire extinguisher</p> |

EXTRA-HELP SCHEDULE

Students should check with their individual teachers as to when extra help sessions will take place.

(Schedules for extra help may vary. A pass from the teacher is required for morning extra help.)

| <u>SUBJECT</u> | <u>DAY/TIME</u> |
|----------------|-----------------|
|----------------|-----------------|

| | |
|------|-------------|
| MATH | _____/_____ |
|------|-------------|

| | |
|-----------------------|-------------|
| ENGLISH LANGUAGE ARTS | _____/_____ |
|-----------------------|-------------|

| | |
|----------------|-------------|
| SOCIAL STUDIES | _____/_____ |
|----------------|-------------|

| | |
|---------|-------------|
| SCIENCE | _____/_____ |
|---------|-------------|

| | |
|------------------|--|
| FOREIGN LANGUAGE | |
|------------------|--|

| | |
|-------|-------------|
| _____ | _____/_____ |
|-------|-------------|

| | |
|-------|-------------|
| _____ | _____/_____ |
|-------|-------------|

I am part of a TEAM!

Our Team Name is _____

Our Team Color is _____

Our Team Motto is _____

Our Team Logo is

